

# 2022 QAC COMPREHENSIVE PLAN

Climate Change and Sea Level Rise



Queen  
Anne's  
County  
MARYLAND

COMPREHENSIVE PLAN 2022



FOREVER  
MARYLAND

Advancing and Enhancing Land Conservation

**30th Annual Maryland Land  
Conservation Conference**

***"Changing the Future, Now!"***

October 4th-5th, 2023 | Annapolis, MD



# A COMPREHENSIVE PLAN IS:

- Blueprint for the future: 20-year horizon
- Establishes a community vision for growth and preservation over the next 20 years
- Guides decisions on land use and preservation, transportation, housing, development, environment
- Coordinates local planning efforts
- Fulfills State of Maryland requirement
  - Md Ann. Code Land Use Article § 3-101.



# A COMPREHENSIVE PLAN IS NOT:

- A regulation
- An ordinance
- Zoning

# WHAT IS A COMPREHENSIVE PLAN?



A comprehensive plan, upon adoption, does not:

- Create new regulations
- Change existing zoning
- Alter the development rights allowed by each property's existing zoning

# WHAT IS A COMPREHENSIVE PLAN?



- Main Components:
  - Needs & Opportunities
  - Supporting Goals & Recommendations
  - Future Development Guide
  - 10-Year Action Plan for Implementation
- Public Input:
  - Helps prioritize needs and opportunities
  - Helps establish community vision for growth and preservation
  - Helps identify desired development patterns

# WHAT IS A COMPREHENSIVE PLAN?



<p><b>CHAPTER 1</b> Introduction</p>	<p>Planning Background County &amp; <b>STATE VISION</b></p>	<p>Legal Context Community Outreach</p>
<p><b>CHAPTER 2</b> County Profile</p>	<p>Physical Characteristics Demographic Characteristics</p>	<p>Housing Characteristics Economic Characteristics</p>
<p><b>CHAPTER 3</b> Community Facilities &amp; Services</p>	<p><b>COMMUNITY FACILITIES &amp; Services</b> <b>PUBLIC UTILITIES</b></p>	<p><b>OPEN SPACE &amp; RECREATION</b></p>
<p><b>CHAPTER 4</b> Land Use</p>	<p><b>EXISTING LAND USE</b> <b>FUTURE LAND USE</b></p>	<p><b>PRIORITY PRESERVATION</b> Growth Management Strategies</p>
<p><b>CHAPTER 5</b> Environmental Resources &amp; Protection</p>	<p><b>NATURAL RESOURCES</b> <b>SENSITIVE AREAS</b> <b>AREA OF CRITICAL STATE CONCERN</b></p>	<p><b>WATER RESOURCES</b> <b>MINERAL RESOURCES</b> <b>FLOOD CONTROL</b></p>
<p><b>CHAPTER 6</b> Transportation</p>	<p><b>TRANSPORTATION SYSTEM</b> Multimodal Facilities</p>	<p>Planned Improvements</p>

# WHAT IS A COMPREHENSIVE PLAN?



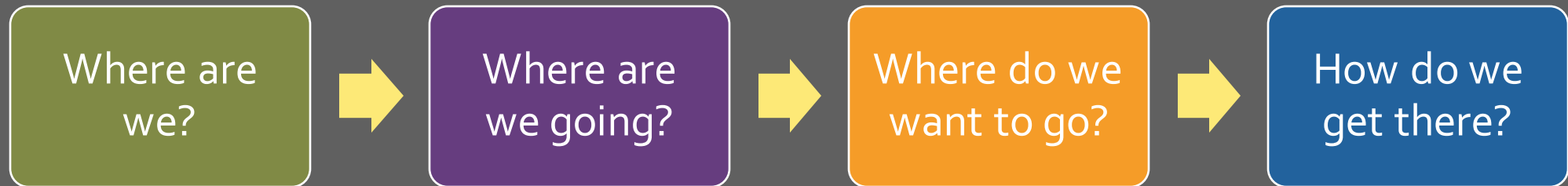
<p><b>CHAPTER 7</b> Historic &amp; Cultural Resources</p>	<p>Preservation Framework Historic Resources</p>	<p>Cultural Resources Programs &amp; Resources</p>
<p><b>CHAPTER 8</b> Economic Development &amp; Tourism</p>	<p>Workforce &amp; Employment <b>FISHERIES</b> Economic Centers</p>	<p>Tourism <b>COMMUNITY RENEWAL</b> Tools &amp; Techniques</p>
<p><b>CHAPTER 9</b> Housing</p>	<p>Housing Stock &amp; Market Affordable/ <b>WORKFORCE HOUSING</b></p>	<p>Public &amp; Assisted Housing Programs &amp; Resources</p>
<p><b>CHAPTER 10</b> Town Planning Framework</p>	<p>County-Town Relationship Town Profiles</p>	<p><b>MUNICIPAL GROWTH</b></p>
<p><b>CHAPTER 11</b> Community Plans</p>	<p>Chester/Stevensville Grasonville</p>	<p>Kent Narrows</p>
<p><b>CHAPTER 12</b> Implementation</p>	<p><b>DEVELOPMENT REGULATIONS</b> Tools &amp; Techniques</p>	<p>Planning Coordination Implementation Tables</p>

# HOW OFTEN IS THE PLAN UPDATED?



- 10-year updates required by the State of Maryland + interim 5-year reviews
- Previous planning efforts
  - 2010 Comprehensive Plan
  - 2006 Kent Narrows Community Plan
  - 2007 Chester/Stevensville Community Plan
  - 2010 Grasonville Community Plan
- Other plans to consider during this update
  - Municipal comprehensive plans
  - QAC Housing Study
  - QAC LPPRP
  - QAC Comprehensive Water & Sewerage Plan
  - MD Transportation Plan
  - And many other plans and data sources

# PLANQAC: STEPS IN THE PLANNING PROCESS





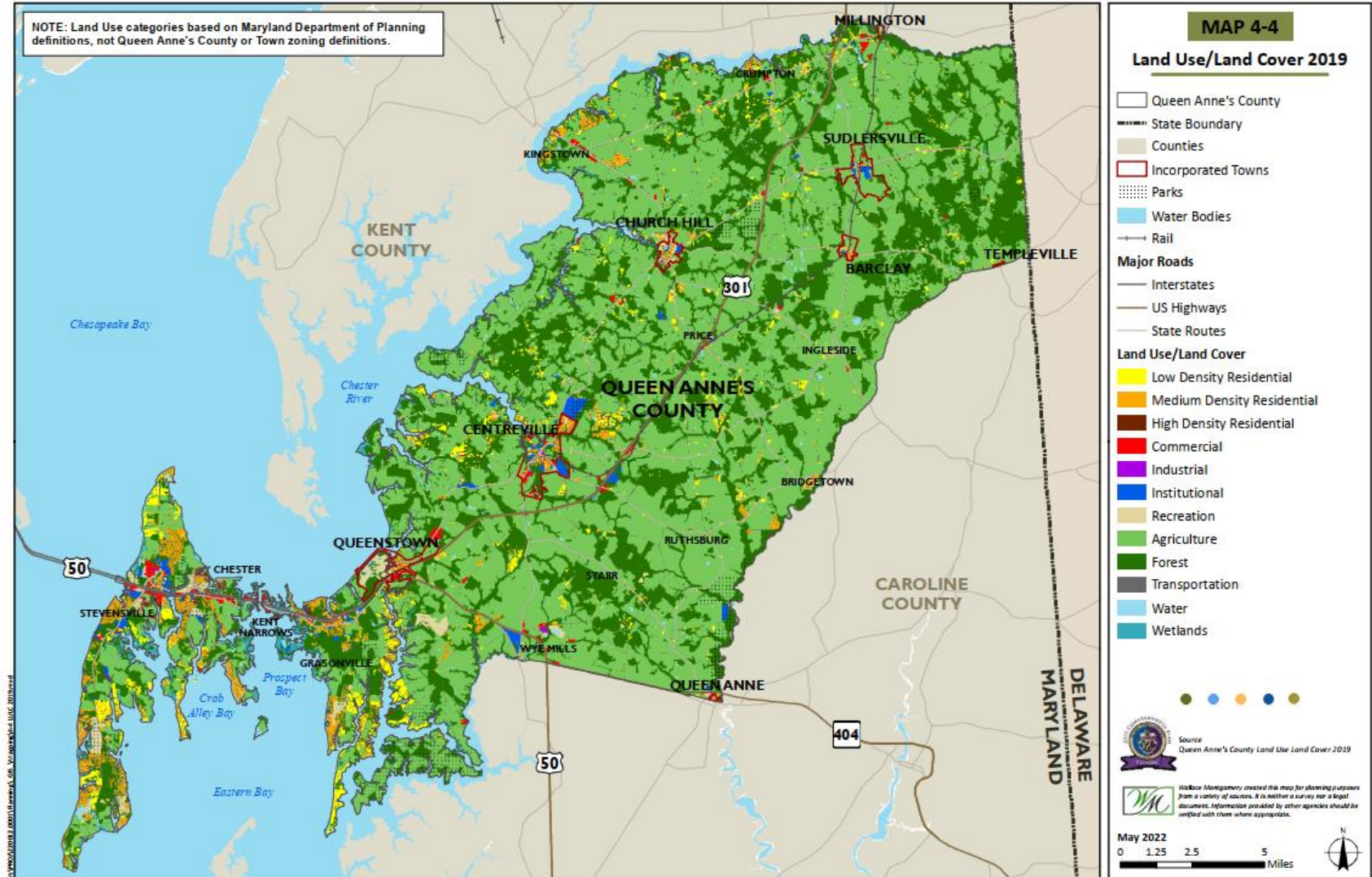
# QUEEN ANNE'S COUNTY

- The Gateway to Maryland's Upper Eastern Shore via the Chesapeake Bay Bridge
- 495 miles of waterfront
- 238,038 acres of land area
- Elevation range: 0' to 87' above sea level
- Relatively flat
- Population of roughly 50,000
- Median Age: 44.4 years
- Bound by the Chester, Corsica, Wye River, and Chesapeake Bay
- County Growth Area = Stevensville, Chester, Kent Narrows, and Grasonville
- 8 municipalities



# LAND USE

Land Use/Land Cover	2019	
	#	%
Agriculture	133,077	56.5%
Low Density Res.	6,781	2.9%
Medium Density Res.	6,285	2.7%
High Density Res.	399	0.2%
Commercial	1,589	0.7%
Institutional	1,815	0.8%
Industrial	66	<0.1%
Open Urban Land	3,194	1.4%
Extractive	NR	NR
Transportation	6,079	2.6%
Forest	72,588	30.8%
Wetland	3,498	1.5%



# WHAT IS A COMPREHENSIVE PLAN?

- Required, policy document
- 1,000-foot overview
- A comprehensive plan
  - Establishes a community's long-term vision, goals, strategies, and policies for guiding future decisions, changes, and investments;
  - Includes background information on the County's past, along with an analysis of current issues and trends;
  - Is intended to serve as a guide for the County's future growth, revitalization, preservation, and resilience over the next 10-20 years; and
  - Will provide guidance for the County's unincorporated areas and address key community issues that require collaboration with Queen Anne's County municipalities and other state and local agencies.

## PLAN ELEMENTS

**PlanQAC** outlines goals, guiding principles, strategies, and actions to achieve the overall community vision for the future of the County. It was prepared following the State's requirement to update the Comprehensive Plan every ten years and contains the following elements (*highlighted items are required by the State's Land Use Article*):

<b>CHAPTER 1</b> Introduction	Planning Background County & <b>STATE VISION</b>	Legal Context Community Outreach
<b>CHAPTER 2</b> County Profile	Physical Characteristics Demographic Characteristics	Housing Characteristics Economic Characteristics
<b>CHAPTER 3</b> Community Facilities & Services	<b>COMMUNITY FACILITIES &amp; Services</b> <b>PUBLIC UTILITIES</b>	<b>OPEN SPACE &amp; RECREATION</b>
<b>CHAPTER 4</b> Land Use	<b>EXISTING LAND USE</b> <b>FUTURE LAND USE</b>	<b>PRIORITY PRESERVATION</b> Growth Management Strategies
<b>CHAPTER 5</b> Environmental Resources	<b>NATURAL RESOURCES</b> <b>SENSITIVE AREAS</b> <b>AREA OF CRITICAL STATE CONCERN</b>	<b>WATER RESOURCES</b> <b>MINERAL RESOURCES</b> <b>FLOOD CONTROL</b>
<b>CHAPTER 6</b> Transportation	<b>TRANSPORTATION SYSTEM</b> Multimodal Facilities	Planned Improvements
<b>CHAPTER 7</b> Historic & Cultural Resources	Preservation Framework Historic Resources	Cultural Resources Programs & Resources
<b>CHAPTER 8</b> Economic Development & Tourism	Workforce & Employment <b>FISHERIES</b> Economic Centers	Tourism <b>COMMUNITY RENEWAL</b> Tools & Techniques
<b>CHAPTER 9</b> Housing	Housing Stock & Market Affordable/ <b>WORKFORCE HOUSING</b>	Public & Assisted Housing Programs & Resources
<b>CHAPTER 10</b> Town Planning Framework	County-Town Relationship Town Profiles	<b>MUNICIPAL GROWTH</b>
<b>CHAPTER 11</b> Community Plans	Chester/Stevensville Grasonville	Kent Narrows
<b>CHAPTER 12</b> Implementation	<b>DEVELOPMENT REGULATIONS</b> Tools & Techniques	Planning Coordination Implementation Tables

# PROCESS

## Community Outreach

- [Project Website](#)
- Public Opinion Survey
- Public Workshops
  - 5 Visioning Workshops
  - 8 Special Topic Workshops

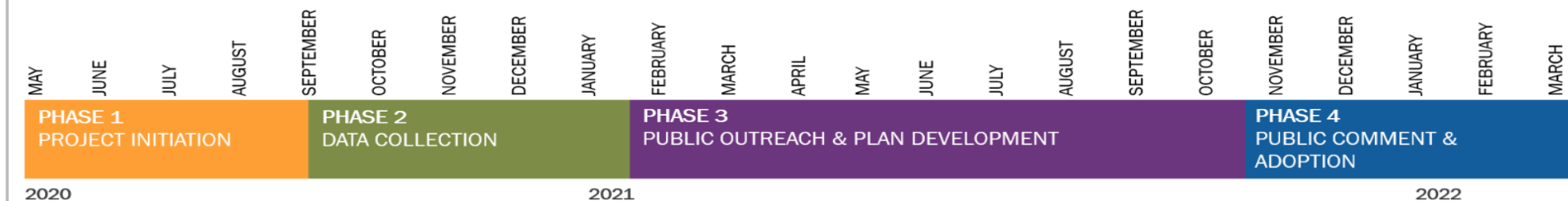
## Meetings

- Technical Committee
- Planning Commission
- County Commissioners
- Joint County Commissioners and Planning Commission meetings



Hybrid Special Topic Workshop: Land Use

## PlanQAC Project Timeline



# VISION AND THEMES

## Vision

- Update from 2010 Comprehensive Plan based on community input
- Emphasis on quintessential rural community

### VISION STATEMENT

PlanQAC's vision is to preserve the County as a quintessential rural community whose overall character exemplifies it as:

- A GREAT PLACE TO LIVE**—Queen Anne's County is a predominantly rural county with small towns connected by creeks and county roads through fields and forests
- A GOOD PLACE TO WORK**—Queen Anne's County encourages agriculture, seafood and maritime industries, tourism and outdoor sports, and small business and high-tech enterprise
- A GOOD NEIGHBOR**—Queen Anne's County is a faithful steward of its natural and cultural heritage for the Chesapeake Bay and other Eastern Shore counties
- A PROTECTIVE COMMUNITY**—Queen Anne's County cultivates its citizens' expectations and opportunities, emphasizing that development should not impair the quality of life enjoyed by all
- A SUPPORTIVE COUNTY**—Queen Anne's County supports the highest quality of education for its citizens, seeking to fully prepare them for the future

## Themes

- Connection

### 5. Environmental Resources

**VISION**

Remain a rural, agricultural, and maritime County that restores, enhances, protects, conserves, and stewards its valuable land, air, and water resources by:

- Conserving and protecting agricultural lands, open spaces, woodlands, wetlands, and wildlife habitat
- Participating in Chesapeake Bay restoration efforts by conserving and protecting water resources and adhering to environmental regulations and low-impact stormwater practices
- Preserving good air quality and views, including the night sky
- Supporting agricultural, maritime, and tourism industries
- Facilitating environmental education programs to promote energy efficiency, comprehensive recycling practices, clean air and water policies, resource conservation, and sustainable land use practices
- Protecting social and economic assets by enhancing environmental resiliency and mitigating potential effects of climate change

KEY ISSUES	PLAN THEMES
Adequate Public Facilities Capacity Limitations	<b>FISCAL RESPONSIBILITY</b> Leverage funding opportunities related to FEMA CRS & EPA MS4 requirements
Climate Change, Sea Level Rise & Increased Storm Severity	<b>SUSTAINABLE GROWTH</b> Mitigating future effects of climate change
Impervious Surface Impacts to Watershed Health	<b>COMMUNITY REVITALIZATION</b> Direct growth to areas with adequate public facilities
NPDES & MS4 Stormwater Permit Requirements	<b>PRESERVATION &amp; CONSERVATION</b> Encourage reduction in amount of impervious surfaces
Hazard Identification & Mitigation	<b>HEALTH &amp; RESILIENCE</b> Planning for a variety of natural hazards

**RELEVANT STATE VISIONS**

☆☆☆ [Icons: speech bubble, book, house, water tap, location pin, house, envelope, recycling, leaf, sun, clipboard]

**GOALS**

The overarching goal for environmental resources is to adopt policies, regulations, legislation, and enforcement procedures and appropriate funding for programs and projects to restore, enhance, protect, and conserve the County's land, air, and water resources, while establishing programs to generate awareness of and support for these measures.

- 5-1 Implement resource protection, conservation, and preservation strategies that promote high water quality and protect aquatic life throughout Queen Anne's County.
- 5-2 Implement conservation, preservation, and regulation strategies including environmental protection and resource conservation measures.
- 5-3 Implement a growth management strategy to direct new and infill development to existing Growth Areas.

Environmental Resources PlanQAC 2022 Page 5-1

Figure 1-3. Plan Themes



### FISCAL RESPONSIBILITY

Includes providing infrastructure and services to citizens so that tax rates can remain low through cost-efficient growth and policies.



### SUSTAINABLE GROWTH

Includes the wise use of physical resources, which allows the County to meet current and projected needs, while conserving resources for future generations.



### COMMUNITY REVITALIZATION

Includes infill development of vacant parcels within developed areas and the redevelopment of existing sites.



### RESOURCE PRESERVATION & CONSERVATION

Includes the protection or saving of resources in the present for the purpose of using them in the future, as well as the reduction or more efficient use of natural resources, specifically non-renewable resources.



### HEALTH & RESILIENCE

Includes increasing the health, vitality, and resilience of the community through the improvement of the natural, built, and social environment, as well as responding to and accounting for the impacts of climate change.

# CLIMATE CHANGE AND SEA LEVEL RISE

How does it all come together in a Comprehensive Plan?

- Comprehensive plans are usually not standalone documents but incorporate and support other plans that have previously been established.
- They also provide support for future grants, documents, recommendations, and studies to be completed.
- [2016 Sea Level Rise and Coastal Storm Surge Vulnerability Assessment Study](#)
  - [Sea Level Rise & Coastal Vulnerability Viewer](#)
- [2018 Multijurisdictional Hazard Mitigation Plan](#)
- Nuisance Flood Plan
- 2019 County Climate Resilience Planning & Financing Study

# WATER RESOURCES ELEMENT (WRE)

## What is a WRE?

- In 2007, HB 1141 required for a Water Resources Element (WRE) to be included in local land use plans.
- The purpose of the WRE is to identify:
  - Drinking water and other water resources that will adequately provide for existing and future needs; and
  - Suitable receiving water and land area to meet stormwater management and wastewater treatment for existing and future needs.

## Queen Anne's County WRE

- Climate change is integrated in the WRE by:
  - Identifying resilience and hazard planning tools such as the 2016 Sea Level Rise and Coastal Vulnerability Assessment and finalizing the 2019 County Climate Resilience Planning and Financing Study.
  - Identifying that our existing wetlands offer protection to sea level rise and inundation; and
  - The repetition of the statement, "The County must contemplate sustainable and resilient land use policies in the face of necessary hazard planning."

# PLAN → FUTURE

- Throughout each chapter, strategies and recommendations are established to accomplish future goals for the County.
- These strategies and recommendations are incorporated into the Zoning Code and capital improvement programs to better manage growth, pace of development, improve environmental quality, and ensure public facilities meet the needs of residents.
- Implementation Matrix
  - All recommended actions
  - Department/agency responsibilities
- Monitoring of progress



# IMPLEMENTATION MATRIX

No.	Action	Lead Agency & Implementation Partners	Capital Item
<b>GOAL 4-2: Agricultural land preservation.</b>			
<b>Strategy 1</b> Continue discussions and relationships with reliable resources for agricultural land preservation and gain significant local support in conjunction with State agricultural land preservation decisions.			
1.1	Continue to implement Priority Preservation Area strategies and preservation programs (e.g., MALPF, MET, CREP).	<b>PNZ, P&amp;R, SCD, DNR, APAB</b>	No
1.2	Match MALPF funds from the agricultural transfer tax.	<b>BCC, P&amp;R, APAB</b>	No
1.3	Continue to aggressively apply for preservation funding including POS, MALPF, MET, Rural Legacy Program, CREP, and CRP funds and advocate for larger funding sources for these programs.	<b>BFIT, P&amp;R, PNZ, APAB</b>	No
1.4	Maintain MALPF Certification and other State program requirements to receive State preservation resources.	<b>SCD, P&amp;R, APAB</b>	No
1.5	Conduct analysis of benefits of TDRs to Growth Areas and evaluate the County's Noncontiguous Development Rights (NCD) program.	<b>PNZ, P&amp;R, DPW, SCD</b>	No
1.6	Continue to solidify the County's agricultural industry as a national asset by preserving the County's prime agricultural soils.	<b>SCD, PNZ, P&amp;R, APAB</b>	No
<b>Strategy 2</b> Support the establishment of greenbelts to define Growth Area boundaries, coordinating with Towns as appropriate.			
2.1	Collaborate with the municipalities as they explore the annexation potential of their Growth Areas.	<b>PNZ, DPW, Towns</b>	No
2.2	As these Growth Areas are finalized in the towns' Municipal Growth Elements, promote the designation of greenbelts as part of the County's Priority Preservation Area (PPA).	<b>PNZ, DPW, COG, Towns</b>	No
<b>CHAPTER 5—ENVIRONMENTAL RESOURCES</b>			
<b>GOAL 5-1: Implement resource protection, conservation, and preservation strategies that promote high water quality and protect aquatic life throughout Queen Anne's County.</b>			
<b>Strategy 1</b> Implement watershed based planning efforts to advance achievement of WIP and MS4 goals.			
1.1	Develop and implement strategies to reduce pollutant loads on a watershed by watershed basis in accordance with WIP and MS4 goals.	<b>DPW, PNZ, SCD, MDE</b>	No
1.2	Update existing impervious surface analyses Countywide, beginning with the Kent Island Urban Area.	<b>DPW, PNZ, IT</b>	No
1.3	Track and limit impervious surface percentages on a watershed basis, in accordance with impervious surface thresholds established by MDE.	<b>DPW, PNZ, MDE</b>	No
1.4	Develop a stormwater outfall inspection program to monitor mapped outfalls throughout the County.	<b>DPW, MDE</b>	No
<b>Strategy 2</b> Promote and facilitate the protection of Sensitive Areas.			
2.1	Support State programs for the protection of wetlands and contemplate a no net loss policy.	<b>PNZ, MDE</b>	No
2.2	Continue to implement the County's wetland and stream buffer protection ordinances.	<b>PNZ, CAC, MDE</b>	No
2.3	Support the implementation of the Forest Mitigation Plan and Accounting Procedure.	<b>PNZ, DNR, MDE</b>	No
2.4	Consider establishing a no net loss of forest policy for the County.	<b>PNZ, BCC</b>	No
2.5	Continue to implement the Chesapeake Bay Critical Area Program to minimize adverse effects of human activities on water quality and natural habitat and allow for development in a sensitive manner.	<b>PNZ, CAC</b>	No
2.6	Investigate utilizing shoreline restoration as a future way to achieve MS4 restoration goals and address sea level rise vulnerability, particularly if dedicated funding sources become available.	<b>DPW</b>	No
<b>GOAL 5-2: Implement conservation, preservation, and regulation strategies including environmental protection and resource conservation measures.</b>			
<b>Strategy 1</b> Develop steps to improve water quality with the goal of removal from the State's impaired waterway list.			
1.1	Manage the County's water resources in accordance with the adopted <i>Comprehensive Water and Sewerage Plan</i> and the <i>Water Resources Element</i> (see <b>Appendix D</b> ).	<b>DPW, PNZ, COG</b>	No
1.2	Seek grant opportunities for stormwater management retrofits.	<b>DPW, MDE, DNR</b>	No
1.3	Meet the goals outlined in Watershed Implementation Plans.	<b>DPW, PNZ, NGO</b>	No
1.4	Encourage implementation of agricultural best management practices.	<b>PNZ, SCD</b>	No

# MOVING FORWARD

- Throughout the document these statements which direct the County to contemplate **resiliency planning** appear consistently:
  - Project review will include an assessment of the County's vulnerable resources to ensure that the goals of the County's hazard resiliency policy documents are contemplated.
  - During this planning cycle, the community finds itself nearing the limits of adequate public facilities including transportation infrastructure on its state and local roads, the Chesapeake Bay Bridge, local school capacity, and sewerage capacity permit restrictions at the County's KNSG Wastewater Treatment Plant. In addition to these infrastructure challenges, the County must contemplate sustainable and resilient land use policies in the face of necessary hazard planning.

# MOVING FORWARD

## Land Use Key Issue

Resiliency Planning

## Land Use Plan Theme

### HEALTH & RESILIENCE



Includes increasing the health, vitality, and resilience of the community through the improvement of the natural, built, and social environment, as well as responding to and accounting for the impacts of climate change.

- Land Use Chapter
  - Goal 4-1, Strategy 2, Recommendation 8: Review and update regulations to ensure minimal environmental impacts and contemplate hazard resiliency.
  - Resiliency Planning is identified as a Key Issue with the Health and Resilience Plan Theme to integrate land use, environment, housing, and economic development needs.
  - Land Use Change - As climate resiliency plays an ever-increasing role in land use planning, it brings into sharp focus the need to direct growth to designated Growth Areas that can provide adequate public facilities and to preserve the finite resource of the County's tillable soil.
  - Growth Areas - The population growth would be accompanied by employment opportunities with the intent that cost effective public facilities and services will be provided to meet population needs, resulting in a reduction of traffic impacts, and reduction in the impacts on the environment with an emphasis on management and protection of water resources and climate impact resiliency.
  - BMP: Conservation & Protection - Evaluation of vulnerable resources and hazard planning resiliency.

# MOVING FORWARD

## Environmental Resources Key Issue

Climate Change, Sea Level Rise & Increased Storm Severity

## Environmental Resources Plan Theme



SUSTAINABLE GROWTH  
Mitigating future effects of climate change

- Environment Resources Chapter
  - Goal 5-2, Strategy 2, Rec. 1: To accommodate storm surges, nuisance flooding, rising sea levels, and climate change, prevent development in mapped flood zones and evaluate the appropriateness of going beyond FEMA requirements to consider additional restrictions based on projected sea level rise.
  - Goal 5-2, Strategy 2, Rec. 2: During new development project review, contemplate the [2016 Sea Level Rise and Coastal Vulnerability Assessment Plan](#), which identified key vulnerable resources.
  - Goal 5-2, Strategy 2, Rec. 3: Finalize the *2019 County Climate Resilience Planning and Financing Study* and contemplate the prioritization of resiliency projects and capital improvements.
    - Echoed in Water Resources Element (WRE)
  - Co-benefit recommendations including stormwater, water quality, wetlands, conservation, growth management, etc.

# MOVING FORWARD

- Environment Resources Chapter (cont.)
  - Environmental Resources Vision: Protecting social and economic assets by enhancing environmental resiliency and mitigating potential effects of climate change.
  - Climate Change is identified as a Key Issue with the Sustainable Growth Plan Theme to plan for future effects.
  - Climate change section addresses planning documents as guidance, heavy precipitation, and sea level rise.
  - Map 5-6: Sea Level Rise Vulnerability

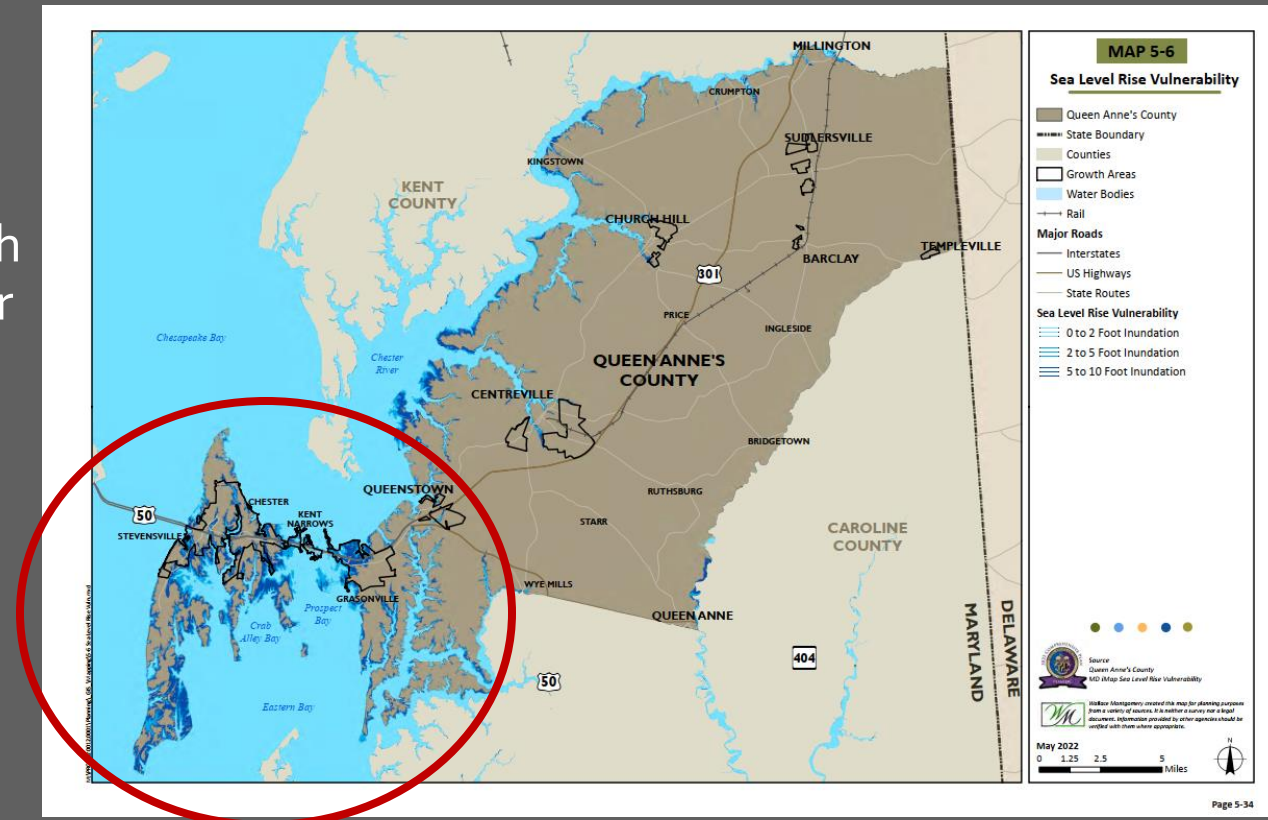
Environmental Resources  
Key Issue

Climate Change, Sea Level Rise & Increased Storm Severity

Environmental Resources  
Plan Theme



SUSTAINABLE GROWTH  
Mitigating future effects of climate change





# COUNTY GROWTH AREAS

# MOVING FORWARD

- Historic & Cultural Resources Chapter
  - Overarching Goal: The overarching goal for historic and cultural resources is to save more of these resources, including historic sites and districts, and incorporate them—and their stories—into the life, growth, and future of Queen Anne’s County. Historic preservation principles, especially encouraging sensitive adaptive use of historic structures, will reinforce the County’s efforts to encourage beneficial growth, arts and entertainment districts, and community resilience to cope with sea level rise and other impacts of climate change.
- Community Facilities & Services Chapter
  - Goal 3-2, Strategy 1, Rec. 5: Provide for the protection and adaptability of public facilities and resources in the face of climate change and sea level rise.

# MOVING FORWARD

- Community Plans Chapter
  - Section devoted to Climate Change and Sea Level Rise
  - Vulnerable resources have been identified through the 2016 Sea Level Rise and Vulnerability Study and in 2019 the analysis was continued with the County Climate Resilience Planning and Financing Study.
  - “Planning for and mitigating these effects in the Growth Areas is an integral part of what will shape Queen Anne’s in the coming years”.
- Community Facilities & Services Chapter
  - Goal 3-2, Strategy 1, Rec. 5: Provide for the protection and adaptability of public facilities and resources in the face of climate change and sea level rise.

**GRASONVILLE GROWTH AREA VISION**

With forward thinking and community involvement, Grasonville will reestablish its former character and sense of place; embody responsible growth that recognizes the character of the area and the needs of its citizens, now and in the future; enhance the quality of life for its citizens, while accommodating the area’s appropriate growth and development; protect its open areas, natural resources, and scenic beauty; provide for increased connectivity; achieve resiliency in the face of climate change; and encourage a balance between the needs of local residents, employees, and visitors to the community.

**PRIORITIES**

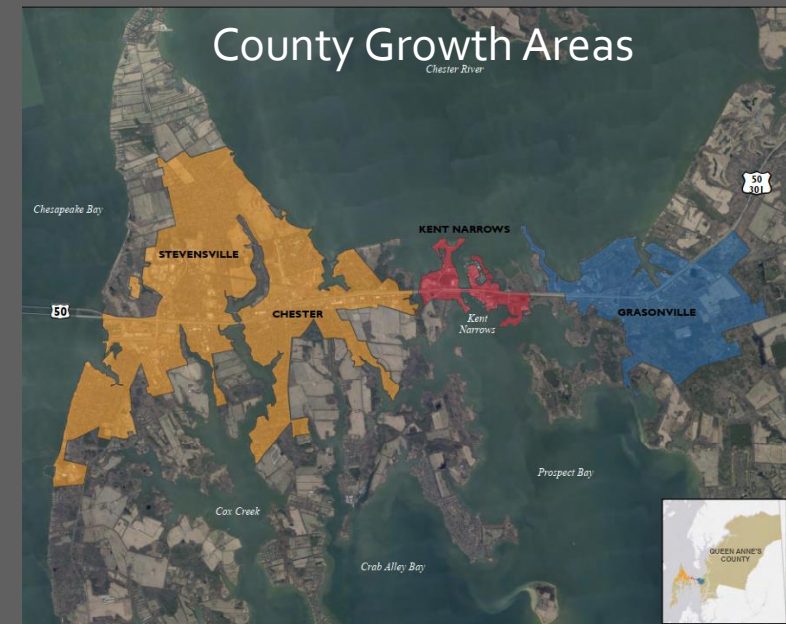
- Pedestrian & Bike Connectivity
- Protect Natural Resources
- Reestablish Character & Sense of Community
- Climate Change & Sea Level Rise Resiliency

**CHESTER/STEVENSVILLE GROWTH AREA VISION**

The Chester/Stevensville Community Growth Area will provide opportunities for families of all shapes, sizes, and income levels to obtain secure, affordable housing; maintain decent employment and education; access useful, safe, and varied transportation options; enjoy a variety of park, recreation and historic/cultural facilities; preserve the community’s environmental resources; and achieve resiliency in the face of climate change.

**PRIORITIES**

- Climate Change & Sea Level Rise Resiliency
- Community Connectivity
- Maintain Community Character





# MOVING FORWARD → IMPLEMENTING FINANCING

## SEA LEVEL RISE AND COASTAL VULNERABILITY ASSESSMENT AND IMPLEMENTATION PLAN

QUEEN ANNE'S COUNTY, MARYLAND



Photo credit: Brian Kaitner, [gothamist.com](http://gothamist.com)

MARCH 2016



PREPARED FOR:  
QUEEN ANNE'S COUNTY  
DEPARTMENT OF PUBLIC WORKS  
312 SAFETY DRIVE  
CENTREVILLE, MARYLAND 21617



PREPARED BY:  
RUMMEL, KLEPPER & KAHL  
81 MOSHER STREET  
BALTIMORE, MARYLAND 21217



Queen Anne's COUNTY

## DRAFT CLIMATE RESILIENCE ACTION STRATEGY

JANUARY 10, 2020

The following document provides a DRAFT Climate Resilience Action Strategy, which was developed by the University of Maryland on behalf of Queen Anne's County. This document was drafted for an internal review by the Queen Anne's County Resilience Action Strategy Work Group and is not intended for public distribution. Please forward all questions and/or concerns to:

Joanne Throwe: [jthrowe@umd.edu](mailto:jthrowe@umd.edu)

Dan Nees: [dnees@umd.edu](mailto:dnees@umd.edu)

DRAFT



Goal 5-2, Strategy 2, Rec. 2: During new development project review, contemplate the 2016 Sea Level Rise and Coastal Vulnerability Assessment Plan, which identified key vulnerable resources.

Goal 5-2, Strategy 2, Rec. 3: Finalize the *2019 County Climate Resilience Planning and Financing Study* and contemplate the prioritization of resiliency projects and capital improvements.

# QUESTIONS?



Amy G. Moredock, CFM  
Director  
[amoredock@qac.org](mailto:amoredock@qac.org)