



**FOREVER**  
MARYLAND

# 2021 Webinar Series

## *Preserving with a Purpose*

B Salisbury

### *Urban Conservation & Urban Agriculture*

**Webinar presented by:**

Hannah Sholder & Kate Medina, Charles Koiner Conservancy  
Atiya Wells, Backyard Basecamp  
Wednesday, September 15th, 2021

***Lead Sponsor of Forever Maryland***



***Presenting Sponsor***

## **Helena Foundation**

James and Sylvia Earl

***Webinar  
Supporter***



**Harry R. Hughes**  
CENTER FOR AGRO-ECOLOGY



# Connecting neighbors to their land, their food, and each other

Hannah Sholder & Kate Medina  
Co-founders and Directors



**CHARLES KOINER** CONSERVANCY  
*for Urban Farming*

# Overview

## *Why...*

- Urban ag conservation

## *How...*

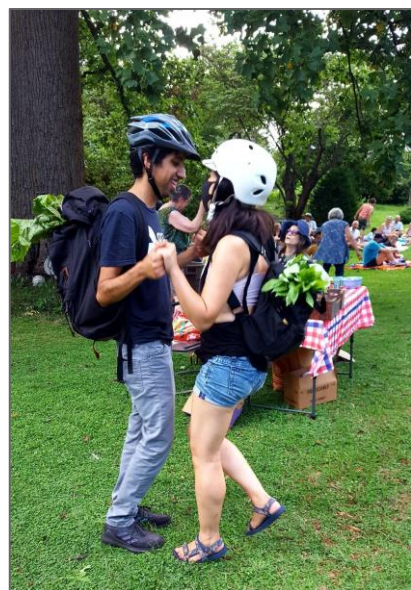
- Conserving Koiner Farm
- Programming and financing

## *The Future...*

- CKC's conservation criteria
- CKC's growing network



# Urban Ag Conservation





# Protecting Charlie Koiner's Farm

- **Montgomery County's Urban Ag. Tax Credit**
  - Makes urban farming affordable
- **Co-Held Easement**
  - Preserves agricultural use
  - Ensures public access
- **Long Term Lease**
  - Secures tenure for management



# Programming

## ➤ Land Stewardship

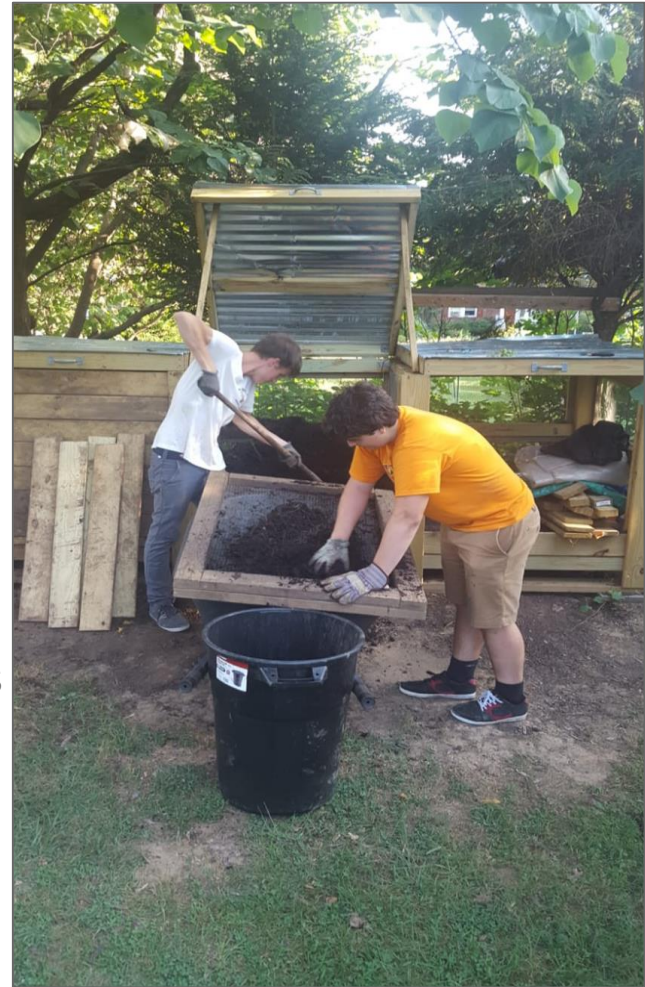
- Acquire & preserve properties for the purpose of agriculture & education
- Provides collective governance of land

## ➤ Farm Management

- Provide fresh affordable produce
- Improve quality of land through regenerative practices

## ➤ Education

- Field trips, self-guided tours, internships, volunteerships, community events, workshops



# Financing

## Produce sales

- Production costs & labor

## Corporate sponsorships

- Capital improvements

## Individual giving (*'Friends of the Farm'*)

- General operating

## Grants & Government Contracts

- Programming (hard & soft costs)

## Fee for service

- Subsidize program costs





# CKC's Conservation Plan Criteria

## Stewardship

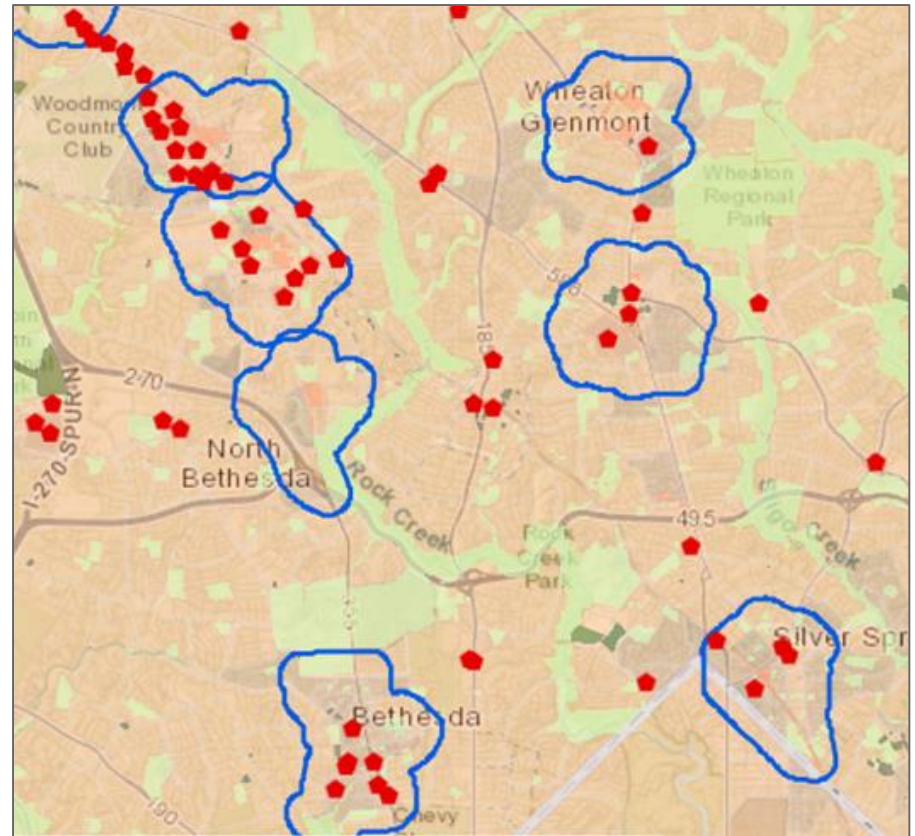
- Local stewards
- Public access
- Long-term preservation options  
(i.e. matching property type to tool)

## Farm Management & Produce Distribution

- Need (i.e. food desert)
- Points of sale (i.e. population density)

## Education

- Proximity to schools
- Proximity to transit





# A Growing Network

## Land Tenure

- County may offer a “licence to operate”
- Need to get support of neighbors

## Community Demographics

- Low income community (+22% LI)
- High minority population (58%)
- Moderate food access (Safeway 0.7 mi)
- Apartment/Condo community 2 blocks away

## Growing Potential

- Adequate size (0.4 acres) & sun
- Need water hook-up and storage shed

## Education Potential

- IMPACT works with Arcola ES (0.3 mi)





**Hannah Sholder**

[hannah@ckcfarming.org](mailto:hannah@ckcfarming.org)

**Medina**

**Kate**

[kate@ckcfarming.org](mailto:kate@ckcfarming.org)



**CHARLES KOINER CONSERVANCY**  
for Urban Farming