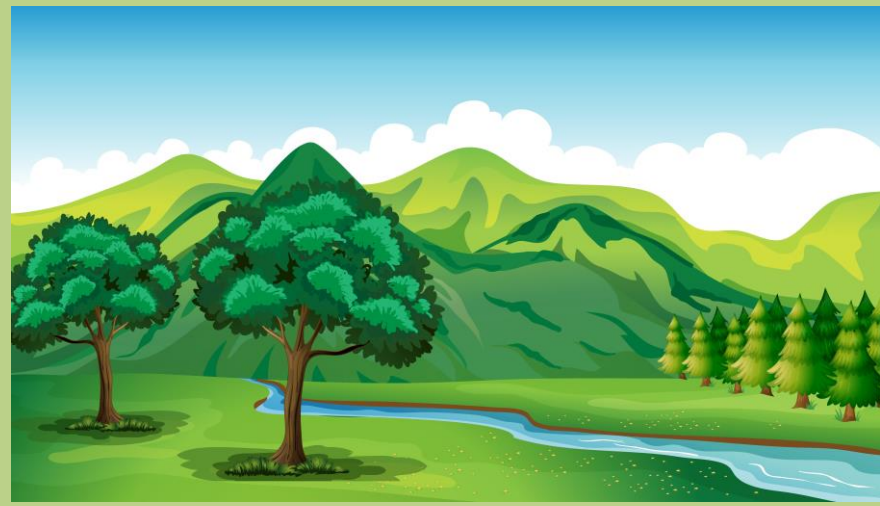
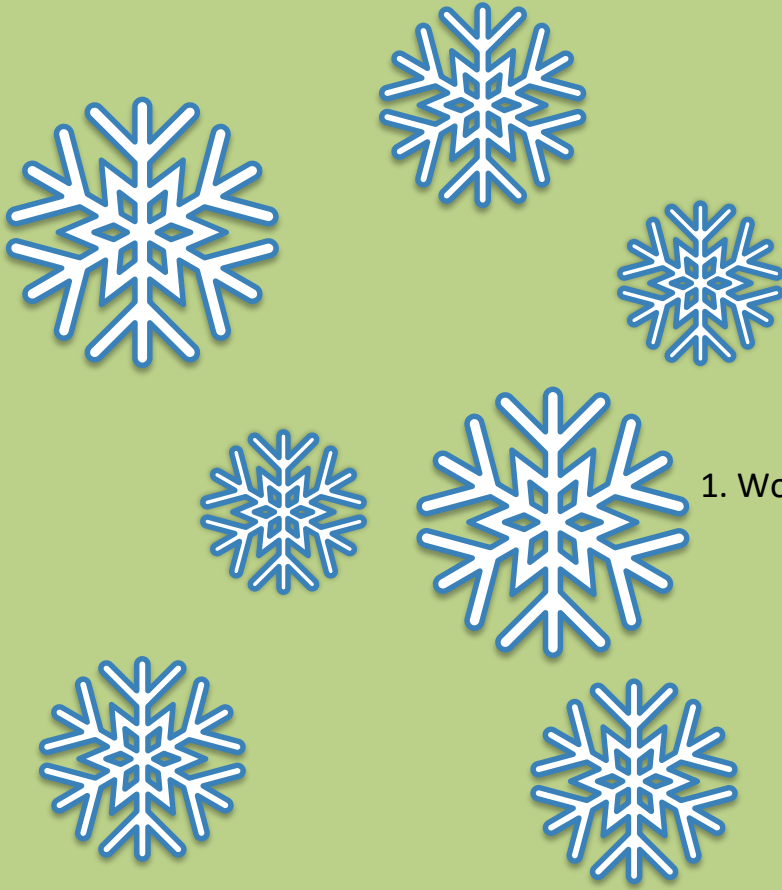


*Preserving and restoring the woods and
waters that sustain wildlife, our planet, and
ourselves*





1. Working at landscape scale

2. There are partners!



HEART OF MARYLAND

CONSERVATION ALLIANCE

Frederick County

Save Historic Antietam

Maryland Environmental Trust

Washington County

Maryland DNR

Md. Forest Service

Catoctin Land Trust

Appalachian Trail Conservancy

Heart of the Civil War Heritage Area

Central Maryland Heritage League

Sugarloaf Countryside Conservancy

HEART OF MARYLAND
CONSERVATION ALLIANCE

Established a purpose and role for our collaborative;

Developed draft mission, vision, values, and goal statements;

Identified proposed geographic boundaries and potential focus areas;

Identified potential sources of funding;

Developed a draft framework for collaboration, communication, and governance.

Proposed Purpose and Role

The Heart of Maryland Conservation Alliance will:

- ✓ Serve as a convener;
- ✓ Help develop regional solutions to conserving land and water;
- ✓ Strengthen existing and ongoing conservation efforts;
- ✓ Attract groups and people from other sectors;
- ✓ Provide a clearinghouse to promote dialogue and mutual support, and
- ✓ Provide a consistent, positive, and powerful conservation message to the public.

Geography: Washington & Frederick counties

Focus Areas

- Antietam Creek watershed
- Antietam National Battlefield
- Potomac River and C&O Canal
- South Mountain (including South Mountain Battlefield, Washington and Gathland State Parks, and the Appalachian Trail)
- Catoctin Creek watershed
- Catoctin Mountain highlands
- Lower Monocacy River watershed
- Monocacy National Battlefield and National Heritage Area
- Sugarloaf Mountain



Photo courtesy the Appalachian Trail Conservancy



John Turgeon: Think Long Game



OK, OK. HELLO EVERYONE. JUDAS YOU ON?

but
r

HEART OF MARYLAND
CONSERVATION ALLIANCE

A CAMPAIGN BUILDOUT

GRASS TOPS

GRASS ROOTS



HEART OF MARYLAND
CONSERVATION ALLIANCE

Rediscover the telephone, cold calling partners

One-on-one walks with partners getting to know one another

Small groups brainstorming on potential projects to launch

Working at the speed of trust

Getting to know people who don't talk at meetings

Pick a long-term goal that seems out of reach

HEART OF MARYLAND
CONSERVATION ALLIANCE

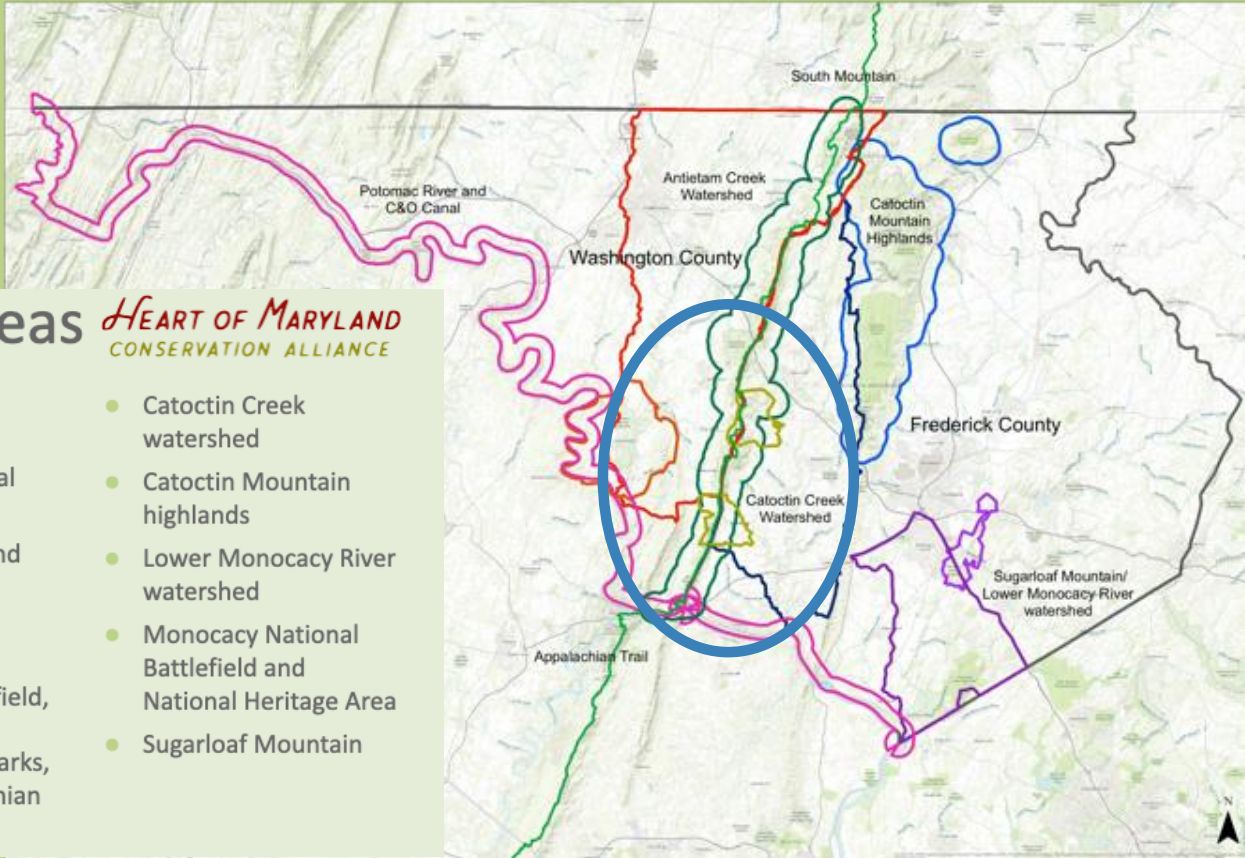
Step 1: Get people in the room, keep them coming back;

Step 2: Know your purpose based on shared values and needs;

Step 3: Choose geographic boundaries;


Step 4: Choose focus areas.

Step 5: Do things together: One big and long-term, others we can do right now



Focus Areas *HEART OF MARYLAND* CONSERVATION ALLIANCE

- Antietam Creek watershed
- Antietam National Battlefield
- Potomac River and C&O Canal
- South Mountain (including South Mountain Battlefield, Washington and Gathland State Parks, and the Appalachian Trail)
- Catoctin Creek watershed
- Catoctin Mountain highlands
- Lower Monocacy River watershed
- Monocacy National Battlefield and National Heritage Area
- Sugarloaf Mountain



South Mountain Campaign
Long term goal

Funding research

Plan development

Fancy maps for public

Grasstop recruitment

Preparing to go public in a big way

Stewardship Work Group
Right now

Count Trees

Reach Landowners

Improve science tools



Stewardship work group:
Counting trees



Stewardship work group:
Collaborating on landowner outreach
on restoration and tree plantings, and conservation

Sharing the responsibilities
Md. Forest Service
Catoctin Land Trust
Maryland Environmental Trust
Preserve the Middletown Valley



Stewardship work group: Parcel reporting tool



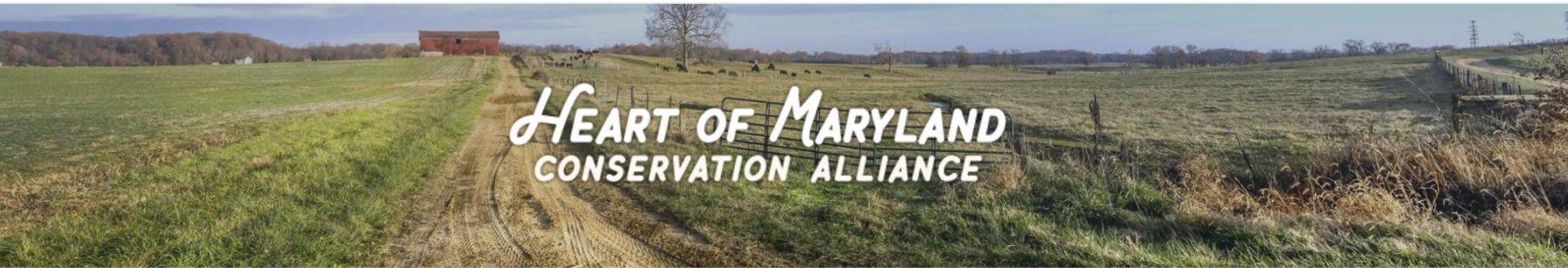
Parcel Report

Parcel Information

Global ID:	{757000D7-DF6F-440F-BA6B-BA36D0FFE415}
Parcel Identification Number:	67446
County:	FREDERICK
Parcel Size (Acres):	95.92

Priority Metrics

Karst (Acres):	0
Karst landscapes have important implications related to water quality. Water and any contaminants or pollutants it contains infiltrates through karst formations and affects groundwater and the health of fragile ecosystems. https://www.americangeosciences.org/sites/default/files/karst.pdf	
Stream Length (Feet):	1412.38
Streams are an important part of the local ecosystem, and their health has direct impacts on aquatic habitat and downstream water quality. Streams are an important part of the local ecosystem. Their health has direct impacts on aquatic habitats and downstream water quality.	
Restoration Opportunity Area (Acres):	1.97
Planting vegetated buffers in these areas filters runoff pollution and provides valuable habitat to terrestrial and aquatic species.	
Tree Canopy (Acres):	34.79
Tree canopy cover has a multitude of benefits, not only for water quality and habitat, but also cleaner air, increased property value, etc.	
Proximity to Conserved Lands (Miles):	0.11
Contiguous areas of conserved land can bring greater benefits for species habitat and opportunities for recreation for future generations to enjoy. Larger protected land areas provide more benefits than smaller scattered pockets of protection.	



Green Pages Directory

Looking for help? Want to connect with a volunteer opportunity? Start here, with our Heart of Maryland Green Pages! Click on any topic to see info on the people, organizations, and agencies whose work aligns with your interests and concerns.

- [View All](#)
- [Agriculture](#)
- [Civil War](#)
- [Climate Change](#)
- [Conservation Easements](#)
- [Environmental Education](#)
- [History and Historic Preservation](#)
- [Land Use Planning](#)
- [Local Food and Drink](#)
- [Open to the Public](#)
- [Outings and Outdoor Programs](#)
- [Policy \(State, Federal, Local\)](#)
- [Stream and Habitat Restoration](#)
- [Trail Planning and Development](#)
- [Tree Plantings & Forestry](#)
- [Volunteer and Intern Opportunities](#)
- [Water Quality](#)



HEART OF MARYLAND
CONSERVATION ALLIANCE

Step 1: Get people in the room.

Step 2: Know your purpose based on shared values and needs;

Step 3: Choose geographic boundaries;

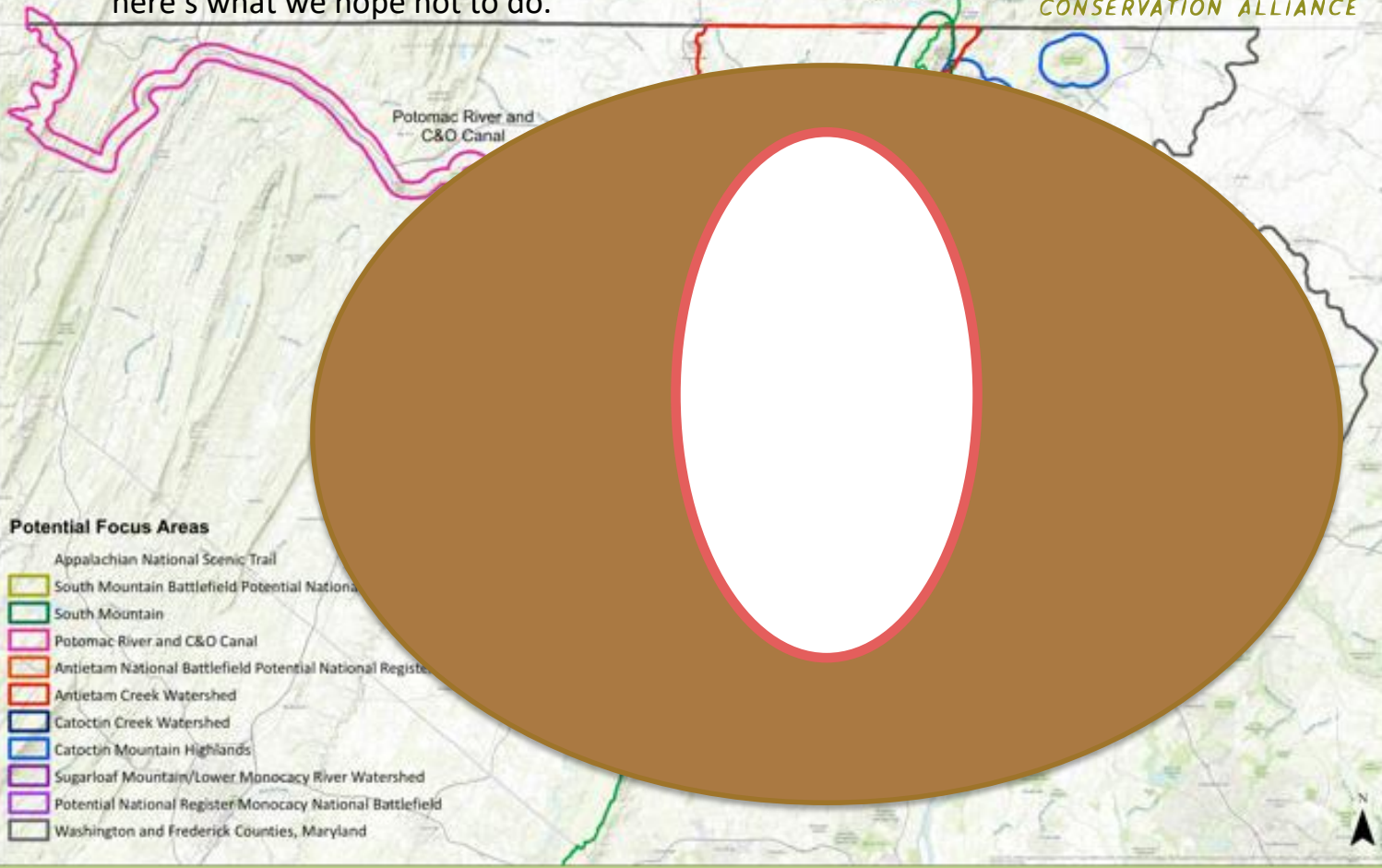
Step 4: Choose focus areas.

Step 5: Cooperate on a project or two — or more!

Step 6: Be flexible; expect change.

That's what we do;
here's what we hope not to do.

HEART OF MARYLAND
CONSERVATION ALLIANCE





HEART OF MARYLAND
CONSERVATION ALLIANCE

Thank you!

Wild East Action Fund
Volgenau Foundation
Appalachian Trail Conservancy

Land & Water Initiative
Chesapeake Bay Funders Initiative
Land Trust Alliance

Keep Maryland Beautiful
Maryland Environmental Trust
Forever Maryland Foundation

Catalyst Fund
*Network for
Landscape Conservation*



David Lillard
david.lillard@catoctinlandtrust.org
www.CatoctinLandTrust.org
240-285-9354