

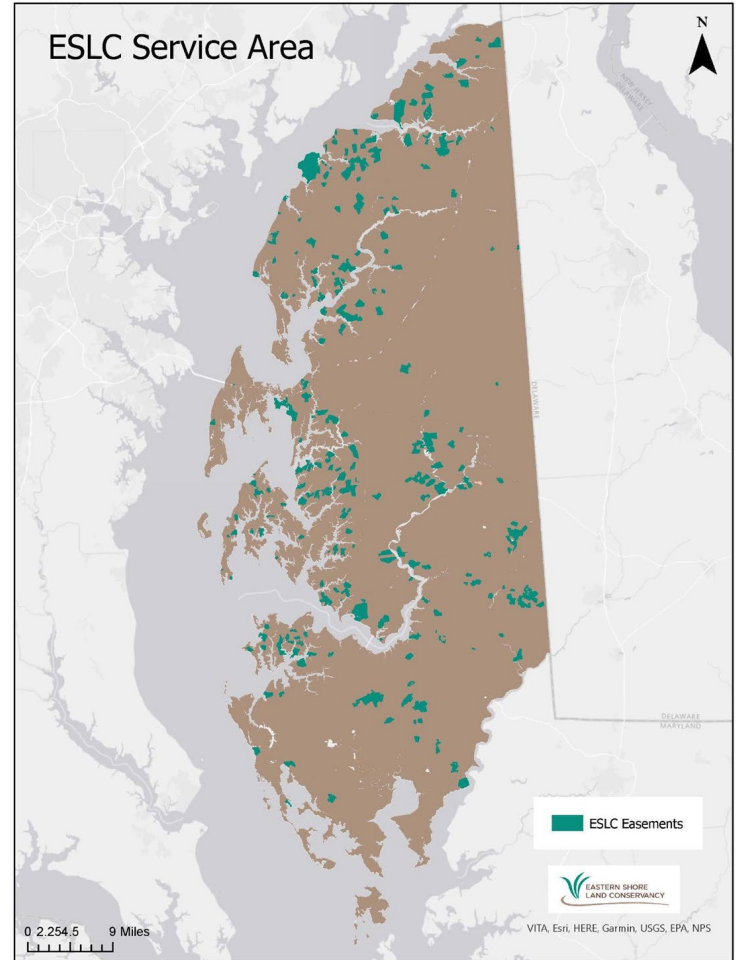
Let's Talk Monitoring...

Lessons Learned by Eastern Shore Land Conservancy



A Brief Overview of ESLC

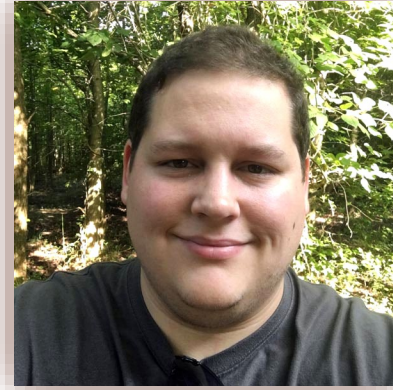
- ❖ Located in Easton, Talbot County
- ❖ 11 Full-Time Staff (3 Land Staff)
- ❖ Six-County Service Area
- ❖ Over 63,000 Acres Protected
- ❖ Three Preserves - One Public Access
- ❖ 309 Easements (and counting!)



Our Land Team



Steve Kline
President



Dave Satterfield
Land Program Manager



Larisa Prezioso
Conservation Specialist



Michael Dunmyer
Stewardship Specialist

Two Stress Tests for Stewardship:

Staffing Shortages

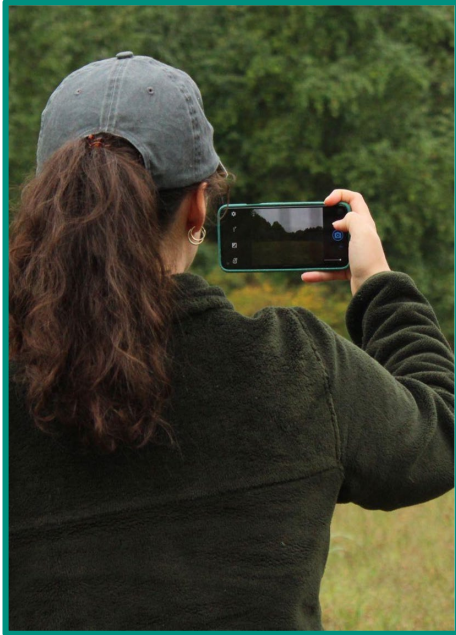
- ❖ Funding
- ❖ Volunteers
- ❖ Covid-19

Staff Turnover

- ❖ Onboarding
- ❖ Knowledge Loss



Three Must-Haves for Stewardship:



Mobile Apps

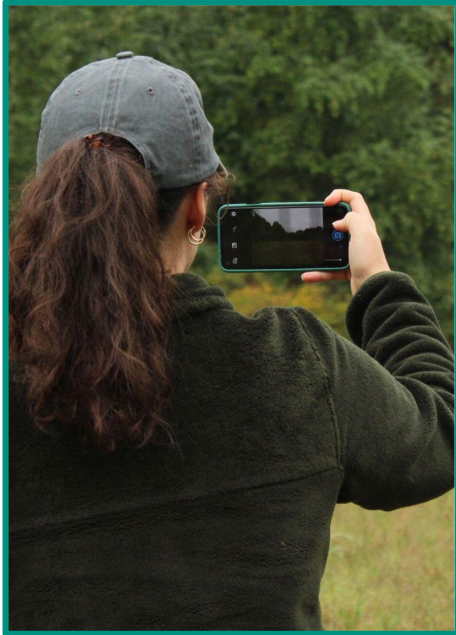


Drones



Summary Sheets

Three Must-Haves for Stewardship:



Mobile Apps



Drones



Summary Sheets

Summary Sheets

- ❖ Ditch bulky field files for clear, replaceable one-page references
- ❖ What do monitors need to know?
 - ✦ Property description, location
 - ✦ Landowner contact info
 - ✦ Current conditions / structures
 - ✦ Other key restrictions (buffers)



STEWARD FIELD REFERENCE

EAS.DOR.12

15 Railroad Avenue | East New Market, MD 21631
Approx. 9.6 total acres | 6 open space, 3 forested

Grantors: Commissioners of East New Market

Current Owners: Same as grantors

Town Office: (410) 943-8112

Existing Structures:

Playground and Pavilion
Various Seating Areas
Walking Path with Signage

Permitted Structures:

Structures and Signage for Public Enjoyment
Office for Park Staff
Agricultural/Management Structures
Fencing and Means of Access

Sensitive Areas:

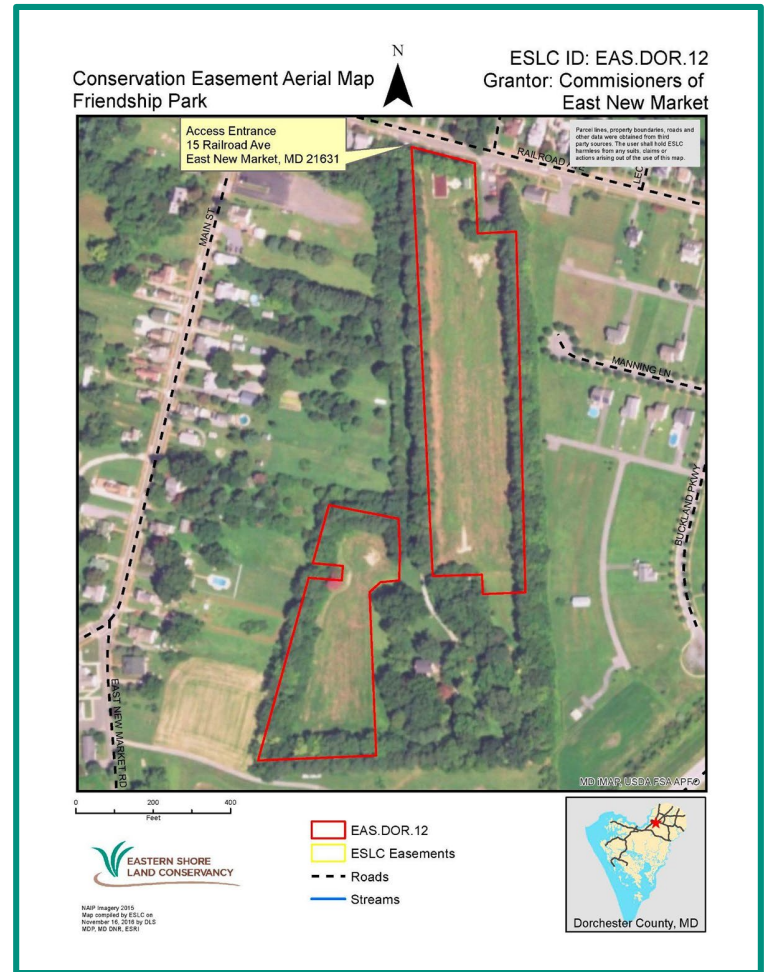
Note any damage to forests or wetlands
Note any concerns regarding public use

Keep an Eye Out For:

Changes in how the property is used
New billboards, signs, or advertisements
Dumping of soil, debris, equipment, trash, etc.
Excavation, dredging, or mining

Summary Sheets

- ❖ Ditch bulky field files for clear, replaceable one-page references
- ❖ What do monitors need to know?
 - ✦ Property description, location
 - ✦ Landowner contact info
 - ✦ Current conditions / structures
 - ✦ Other key restrictions (buffers)





STEWART FIELD REFERENCE

EAS.DOR.12

15 Railroad Avenue | East New Market, MD 21631
Approx. 9.6 total acres | 6 open space, 3 forested

Grantors: Commissioners of East New Market

Current Owners: Same as grantors

Town Office: (410) 943-8112

Existing Structures:

Playground and Pavilion
Various Seating Areas
Walking Path with Signage

Permitted Structures:

Structures and Signage for Public Enjoyment
Office for Park Staff
Agricultural/Management Structures
Fencing and Means of Access

Sensitive Areas:

Note any damage to forests or wetlands
Note any concerns regarding public use

Keep an Eye Out For:

Changes in how the property is used
New billboards, signs, or advertisements
Dumping of soil, debris, equipment, trash, etc.
Excavation, dredging, or mining

Conservation Easement Aerial Map Friendship Park

ESLC ID: EAS.DOR.12
Grantor: Commissioners of
East New Market

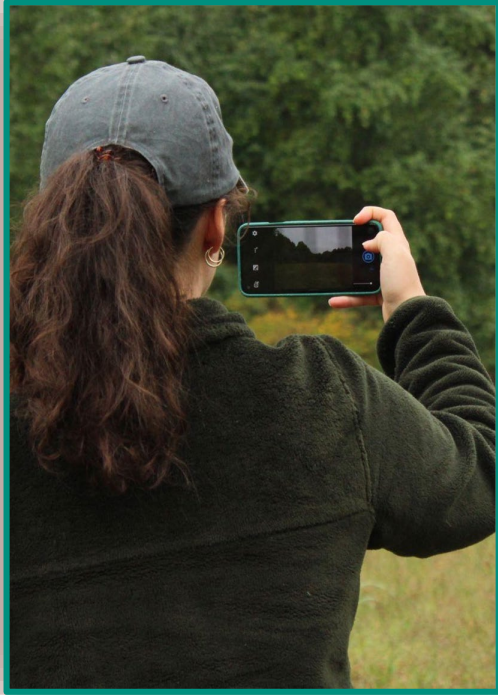


NAP imagery 2015
Map compiled by ESLC on
November 15, 2018 by OLS
MDP, MD DNR, ESLC

- EAS.DOR.12
- ESLC Easements
- Roads
- Streams



Three Must-Haves for Stewardship:



Mobile Apps



Drones



Summary Sheets

Monitoring on Mobile

- ❖ Incorporates summary information
- ❖ Removes steps from **report writing** process
- ❖ Limits monitoring **equipment needs**
- ❖ Provides up-to-date view of progress
- ❖ Pictured: **Fulcrum** (~\$400 per user annually)



Monitoring on Mobile

- ❖ Incorporates summary information
- ❖ Removes steps from report writing process
- ❖ Limits monitoring equipment needs
- ❖ Provides up-to-date view of progress
- ❖ Pictured: Fulcrum (~\$400 per user annually)

The screenshot shows a mobile application interface for "ESCLC Monitoring 2022". At the top, there are "Cancel" and "Save" buttons. The interface is divided into several sections:

- Structures**: A section titled "Changes to Structures?" with two buttons: "Yes" (highlighted in blue) and "No". Below this, it asks "Please List Changes:" with the text "New barn in East field". It also shows "Number of Residences Observed" as "2".
- Land Use**: A section titled "Present Land Use" with the text "Agriculture, Forest/Woodlands". Below this, it asks "Observed Changes to Property" with the text "Dumping".
- Buffers**: A section titled "Is a Buffer Required?" with two buttons: "Yes" (highlighted in blue) and "No". Below this, it asks "Is the Width of the Buffer Adequate?" with three buttons: "Yes", "No" (highlighted in blue), and "N/A". Below that, it asks "Is the Buffer Vegetation Adequate?" with three buttons: "Yes" (highlighted in blue), "No", and "N/A".

At the bottom of the screen, there is a navigation bar with three icons and labels: "Report" (with a document icon), "Locate" (with a location pin icon), and "Delete" (with a trash can icon).

Monitoring on Mobile

- ❖ Incorporates summary information
- ❖ Removes steps from **report writing process**
- ❖ Limits monitoring **equipment needs**
- ❖ Provides up-to-date view of progress
- ❖ Pictured: **Fulcrum** (~\$400 per user annually)

Cancel ESLC Monitoring 2022 Save

Follow Up



Does This Monitoring Report Require Follow Up?


Yes No

Reason For Follow Up:
Contact landowner about dumping


Notes and Comments
Monitor touched base with landowner and received permission to visit the property unattended. Tree plantings are in good condition, but some materials have been dumped nearby.

Photos

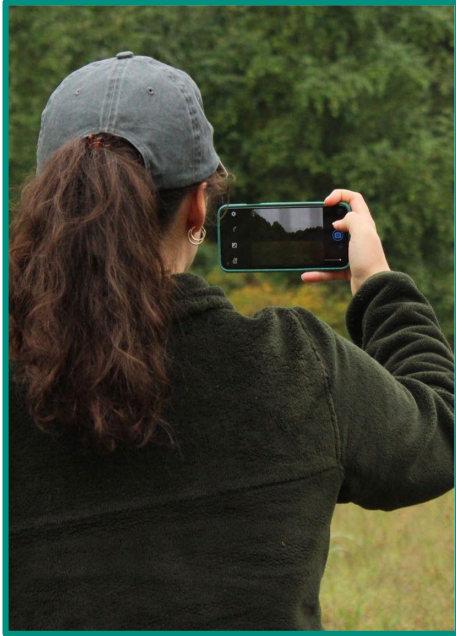
 



Signature



Three Must-Haves for Stewardship:



Mobile Apps



Drones



Summary Sheets









Diverse Benefits for the Entire Organization



Stewardship: substantial improvements to quality and efficiency of monitoring

Conservation: faster site visits and higher-quality baseline documentation

Communications: near-endless supply of current, high-resolution content for outreach



Advancement: aerial property photos for donors and easement landowners



Registration and Certification

- ❖ Drone registration and pilot licensure required by FAA for commercial uses (\$10)
- ❖ Licensing includes testing, available at Navy Annapolis Flight Center (\$160)
- ❖ Bi-annual online recertification

ESLC's Hardware

- ❖ DJI Mavic 2 Pro (and Fly More Bundle)
- ❖ Priorities: **flight time, safety features**
- ❖ **Must-Have Accessories:**
 - ❖ **DJI Smart Controller (or equivalent)**
 - ❖ **Extra Batteries and Propellers**
 - ❖ **Landing Gear or Landing Pad**
- ❖ **Total Cost: ~\$3000 per drone**



Keep Maryland
BEAUTIFUL



Purchasing in 2022



Mini SE

~\$500

- ❖ **Good first drone**
- ❖ **Best for smaller properties**



Mini 3 Pro

~\$1500

- ❖ **Best flight time**
- ❖ **Great image & video quality**



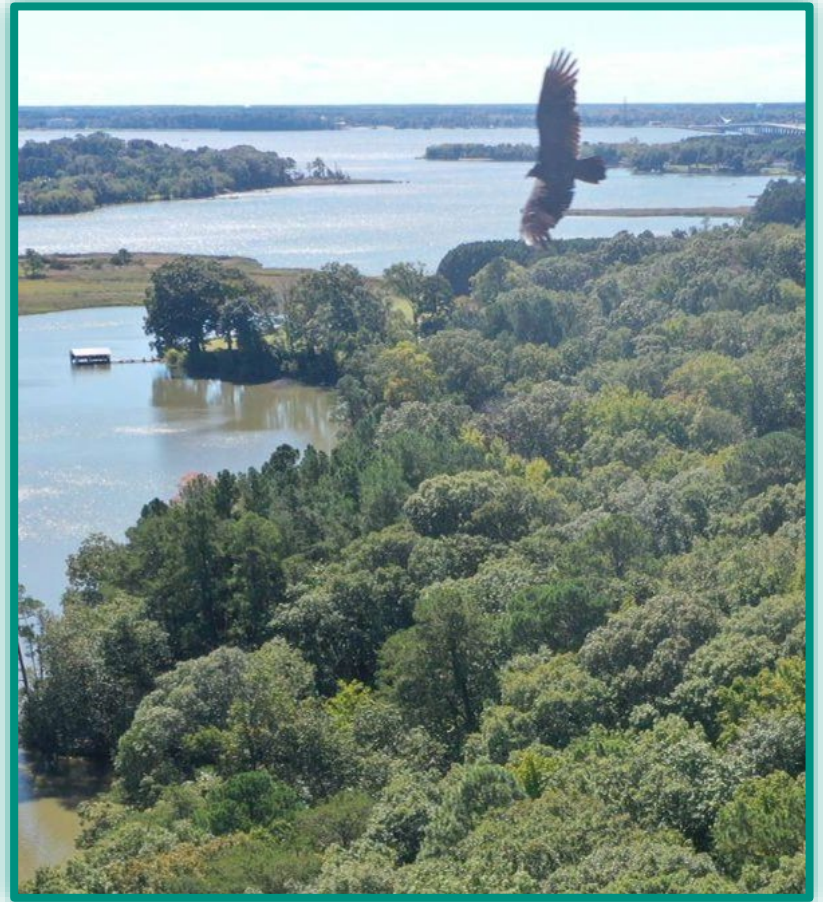
Mavic 3

~\$3000

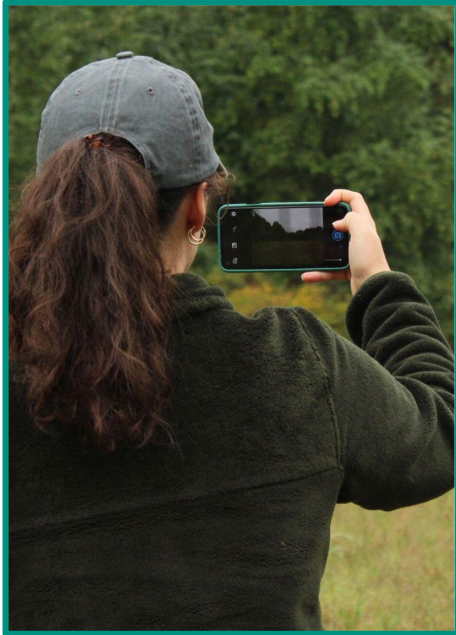
- ❖ **Best flight range**
- ❖ **Best image & video quality**

Limitations of Drone Use

- ❖ **Airspace restrictions**
- ❖ **Visibility through canopies**
- ❖ **Nuisance to wildlife / hunters**
- ❖ **Landowner receptiveness**
- ❖ **Liability for your flight**
- ❖ **Ongoing maintenance costs**
- ❖ **Burdensome image file sizes**



Three Must-Haves for Stewardship:



Mobile Apps



Drones



Summary Sheets



Thank you!

