



Land Conservation Conference

2020 Vision & Beyond:
Climate, Conservation & Collaboration

Regional Conservation Partnerships (RCP's) and How They Can Catalyze Conservation in Maryland

presented by Bill Labich, Highstead Foundation

Wednesday, May 13th, 2020

**Lead Sponsor of
Forever Maryland**



Presenting Sponsor

Helena Foundation

James and Sylvia Earl

Webinar Champion



**Ecosystem
Investment
Partners**



Merritt Pridgeon

Regional Conservation Partnerships (RCPs) and How They Can Catalyze Conservation in Maryland



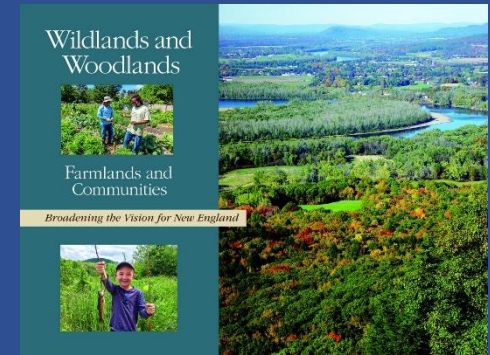
Wednesday, May 13th | 12:15 p.m. - 1:15 p.m.

Bill Labich, Senior Conservationist, Highstead Foundation

Coordinator, RCP Network

Coordinator, Northeast Forest Network

Acting Coordinator, Hudson to Housatonic RCP



Forever Maryland Foundation

Land Conservation Conference: 2020 Vision and Beyond



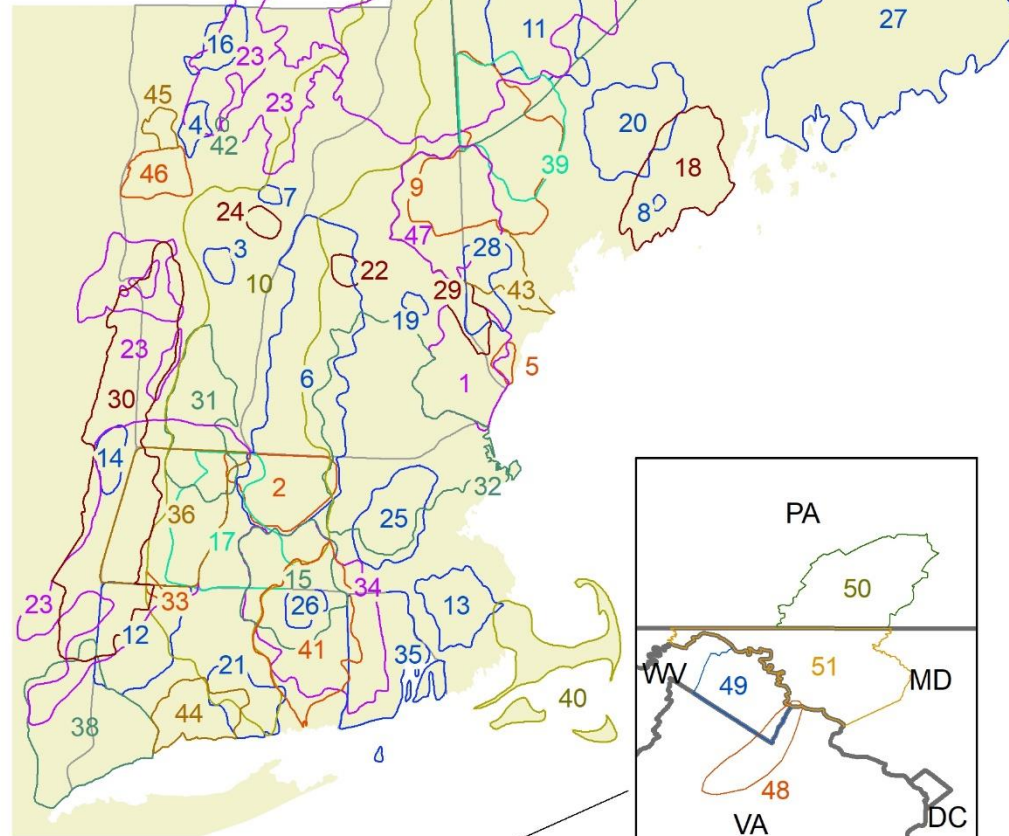
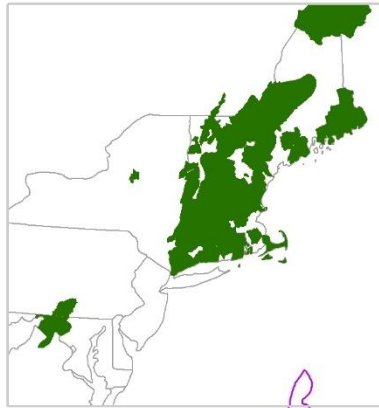
Agenda

- What are RCPs and the RCP Network?
- Why do I promote RCPs?
- Why do people form RCPs? Why do they sustain them?
- Examples of RCPs: their members and achievements
- How do they overcome challenges?
- Role of the RCP Network in their development and collaboration



Regional Conservator Partnership

N E T W O R K



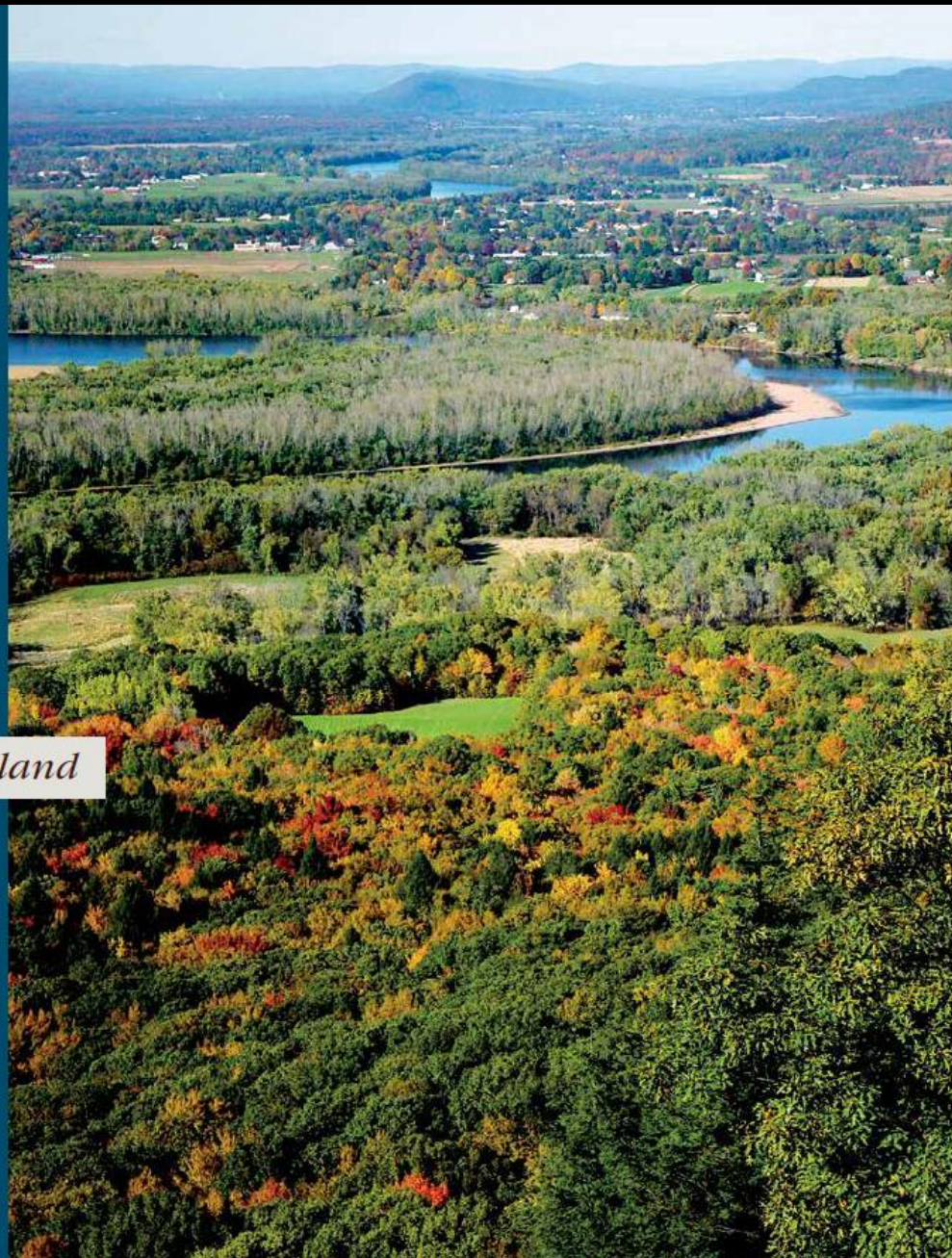
- 1 - Great Bay Resource Protection Partnership
- 2 - North Quabbin Regional Landscape Partnership
- 3 - Chateaugay No Town Conservation Project
- 4 - Chittenden County Uplands Conservation Project
- 5 - Mt. Agamenticus to the Sea Conservation Initiative
- 6 - Quabbin to Cardigan Partnership
- 7 - Orange County Headwaters Project
- 8 - River-Link
- 9 - Upland Headwaters Alliance
- 10 - Friends of the Silvio O. Conte National Fish and Wildlife Refuge
- 11 - High Peaks Initiative
- 12 - Litchfield Hills Greenprint Collaborative
- 13 - Resilient Taunton Watershed Network
- 14 - Rensselaer Plateau Working Forest Initiative
- 15 - Mass-Conn Sustainable Forest Partnership
- 16 - Cold Hollow to Canada Forest Link Project
- 17 - Forever Farmland Initiative
- 18 - 12 Rivers Conservation Initiative
- 19 - Belknap Range Conservation Coalition
- 20 - Kennebec Woodland Partnership
- 21 - Lower CT River and Coastal Region Land Trust Exchange
- 22 - Newfound Land Conservation Partnership
- 23 - Staying Connected Initiative
- 24 - Taylor Valley Conservation Project
- 25 - Metrowest Conservation Alliance
- 26 - Quiet Corner Initiative
- 27 - Downeast Conservation Network
- 28 - Forest Works!
- 29 - Salmon Falls Watershed Collaborative
- 30 - Berkshire-Taconic Regional Conservation Partnership
- 31 - MA-VT Woodlands Partnership
- 32 - Merrimack Conservation Partnership
- 33 - Sandy Brook Conservation Corridor
- 34 - Southern New England Heritage Forest Partnership
- 35 - Rhode Island Woodland Partnership
- 36 - Berkshire Wildlife Linkage Partnership
- 37 - Maine Mountain Collaborative
- 38 - Hudson to Housatonic Regional Conservation Partnership
- 39 - Maine West
- 40 - Massachusetts Coastal Pine Barrens Partnership
- 41 - Thames River Basin Partnership
- 42 - Shutesville Hill Wildlife Corridor Project
- 43 - Saco Watershed Collaborative
- 44 - South Central Regional Land Conservation Alliance
- 45 - Champlain Valley Conservation Partnership
- 46 - Mid-Champlain Valley RCP
- 47 - Saco Headwaters Alliance
- 48 - Blue Ridge Conservation Alliance
- 49 - Safe Water Conservation Collaborative
- 50 - South Mountain Conservation Landscape
- 51 - Heart of Maryland Conservation Alliance

Wildlands and Woodlands



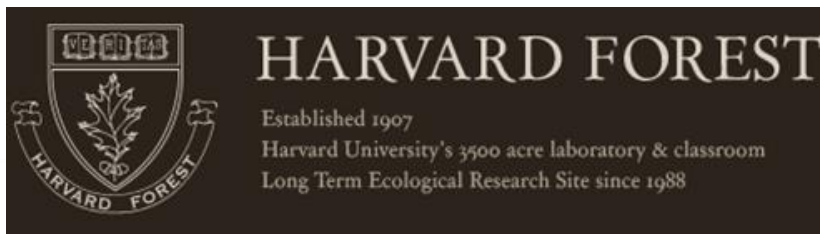
Farmlands and Communities

Broadening the Vision for New England

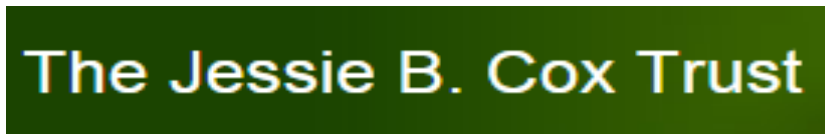




The Sustaining Family Forests Initiative



Department of Conservation and Recreation
Commonwealth of Massachusetts



Me
1993

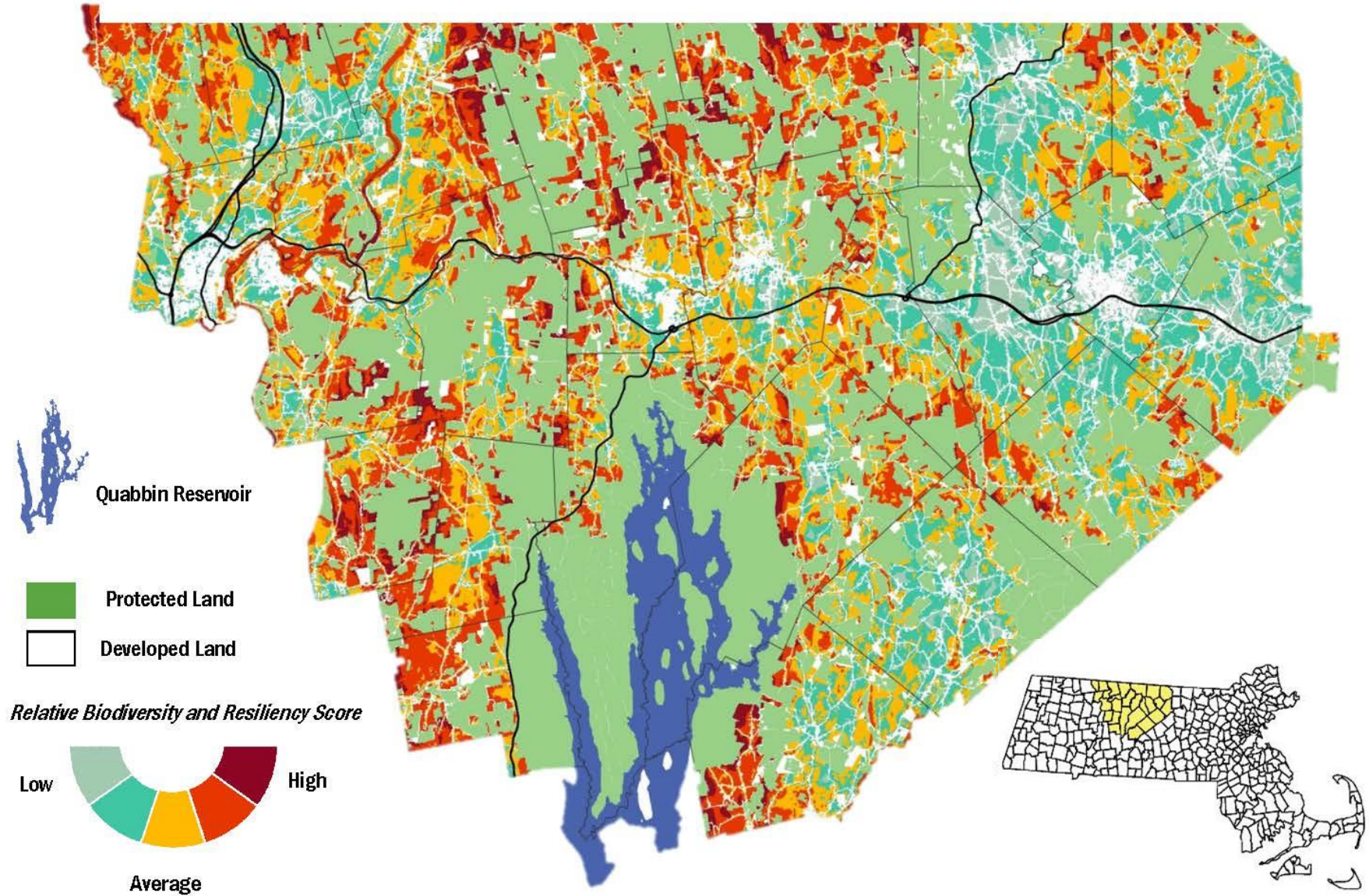
Consulting Forester and
Environmental Educator



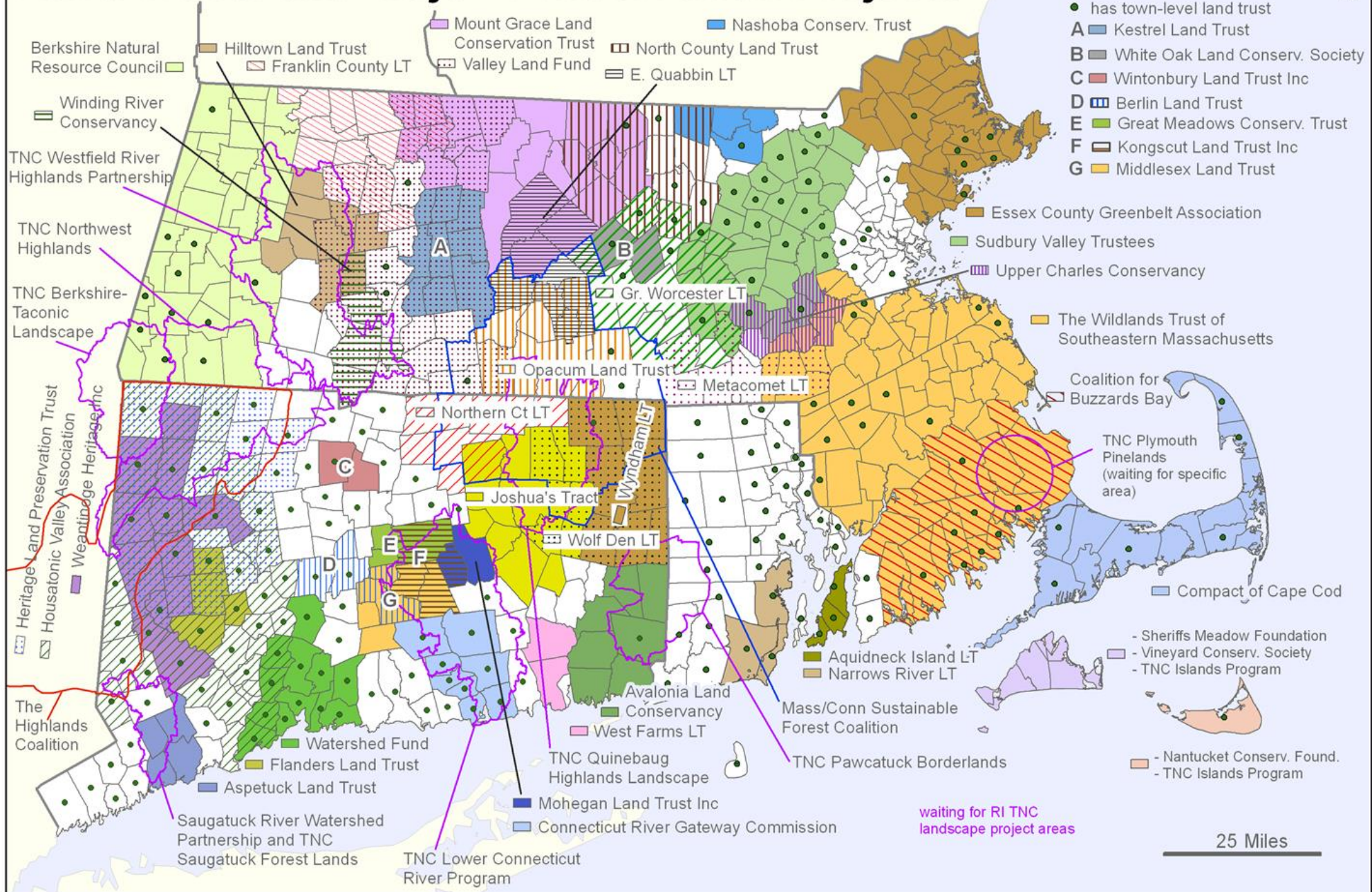
Strategic Biodiversity Conservation Map

North Quabbin Regional Landscape Partnership

Created in 2014 with support from Highstead and the Open Space Institute



Land Trusts and Major Conservation Projects



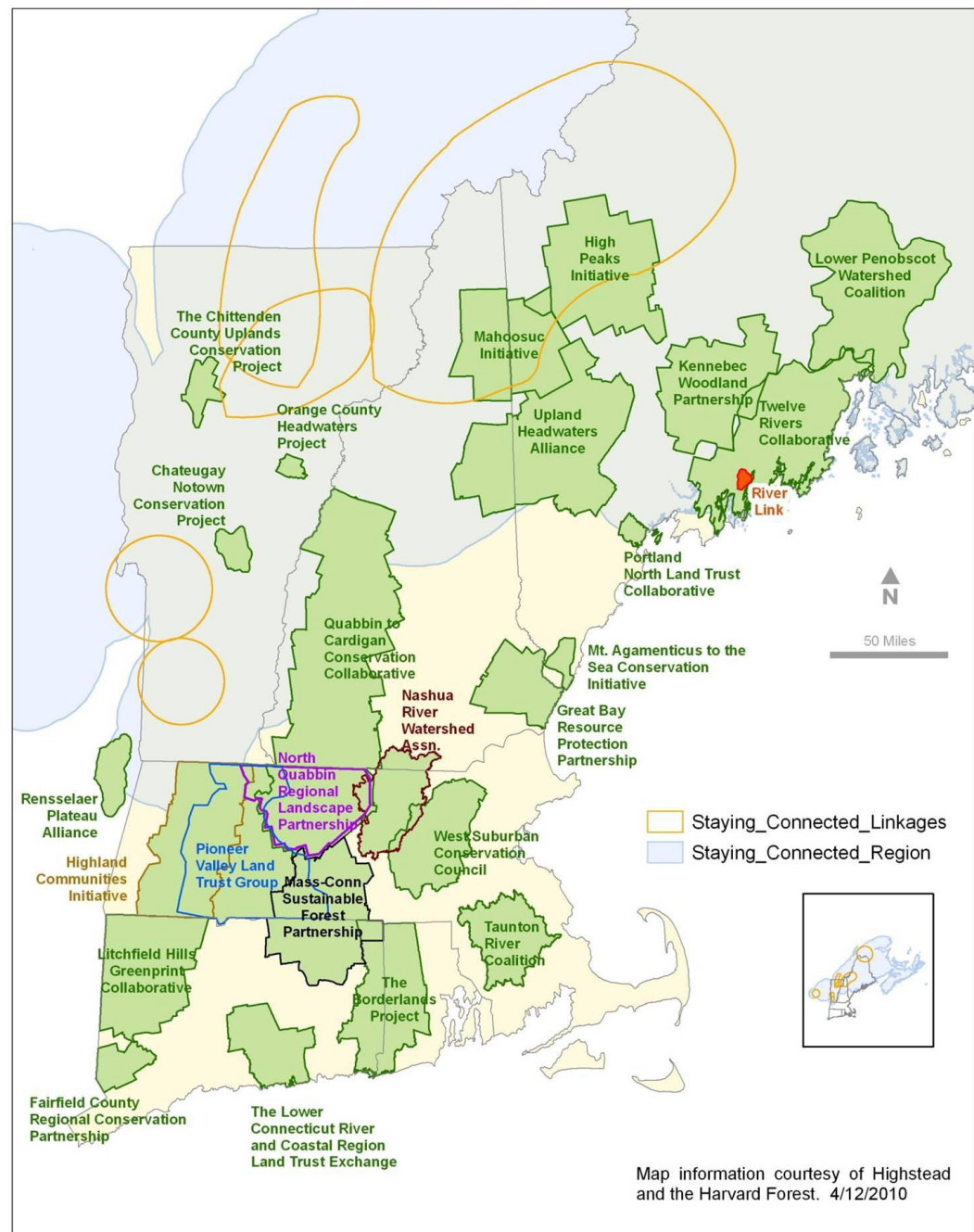
Regional land trusts were defined as those who concentrate their land protection activities in well defined, contiguous regions. Most of the data is from the

Compiled by Brian Hall (brhall@fas.harvard.edu) at The Harvard Forest (978 724-2302) as part of the Wildlands and Woodlands Vision



The Regional Conservation Partnership Handbook

10 Steps to Effective and Enduring Collaborative Conservation at Scale



Map information courtesy of Highstead and the Harvard Forest. 4/12/2010

Reasons people have established an RCP

- **A regional land trust wanting to have more useful relationships with local partner organizations**
- **Think and act at the landscape scale and be more strategic with all activities**
- **State government wanting to advance its priorities**
- **Partners wanting recognition for their unique landscape**
- **Enable landowners to donate zero-transaction cost easements**
- **Solve systemic problems involving barriers to habitat connectivity at scale**
- **Fill in landowner engagement gaps due to state cuts in forestry extension services**
- **Fill in a blank space on the RCP map**
- **Access \$ tens of millions in earmarks for waterfowl habitat**
- **Get a grant only available for RCPs**
- **Aggregate hundreds of wooded parcels for land protection**
- **Appeal more to community-services focused funders**

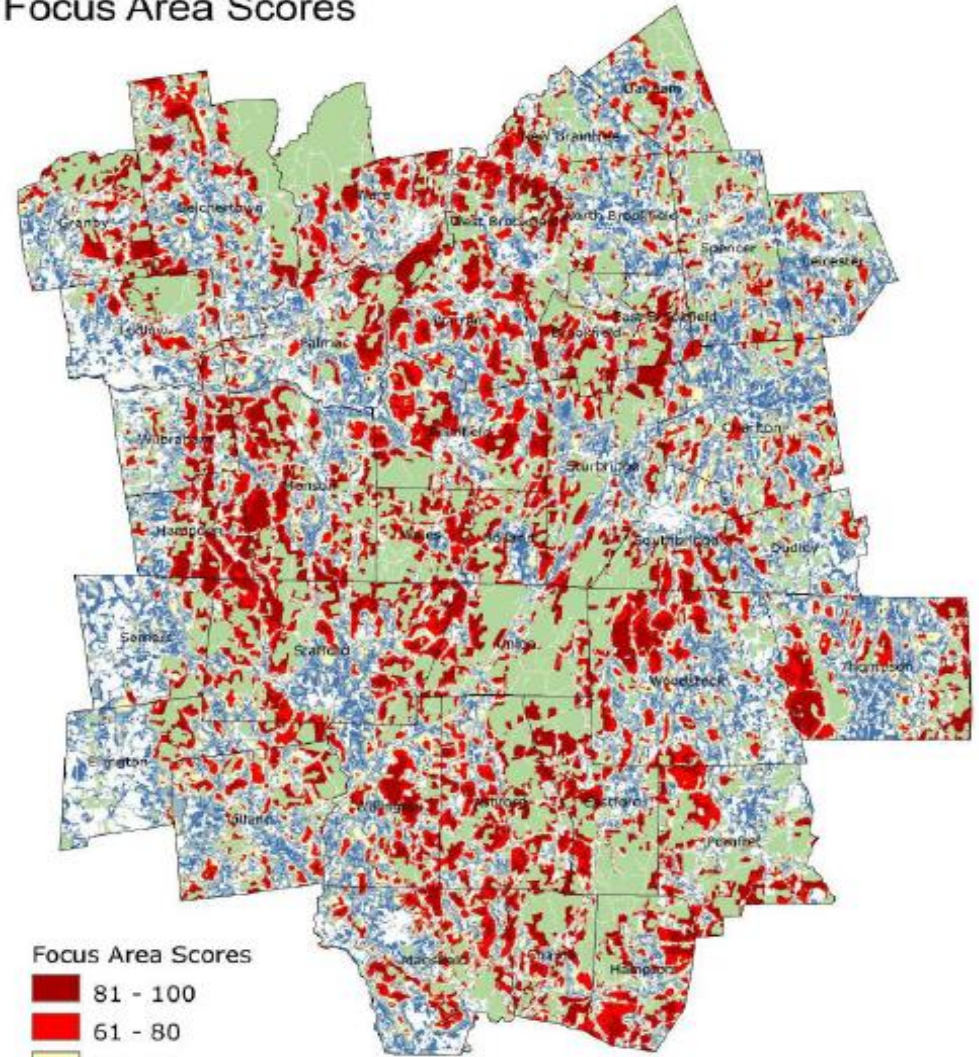
Reasons they keep their RCP going

- **Access more resources**
 - Tell a bigger, better, more exciting story
 - Attract and access more funding for their activities
 - Benefit from the investments of higher-capacity partner groups and agencies
 - Acquire hard-to-get funding or that which requires collaboration of grantees
 - Build capacity in the region to serve multiple interests
- **Coordinate better the resources you have at a larger scale**
 - Increase coordination and decrease unnecessary competition
 - Take on a bigger landscape mission that leverages local investments over time
 - Layer funding from different sources, at different scales, in sequence, over time
 - Manage invasives, deer hunting, and trail networks
- **Innovate with less risk**
 - Try harder things that take longer time to pull off
 - Build relationships with partners from other sectors

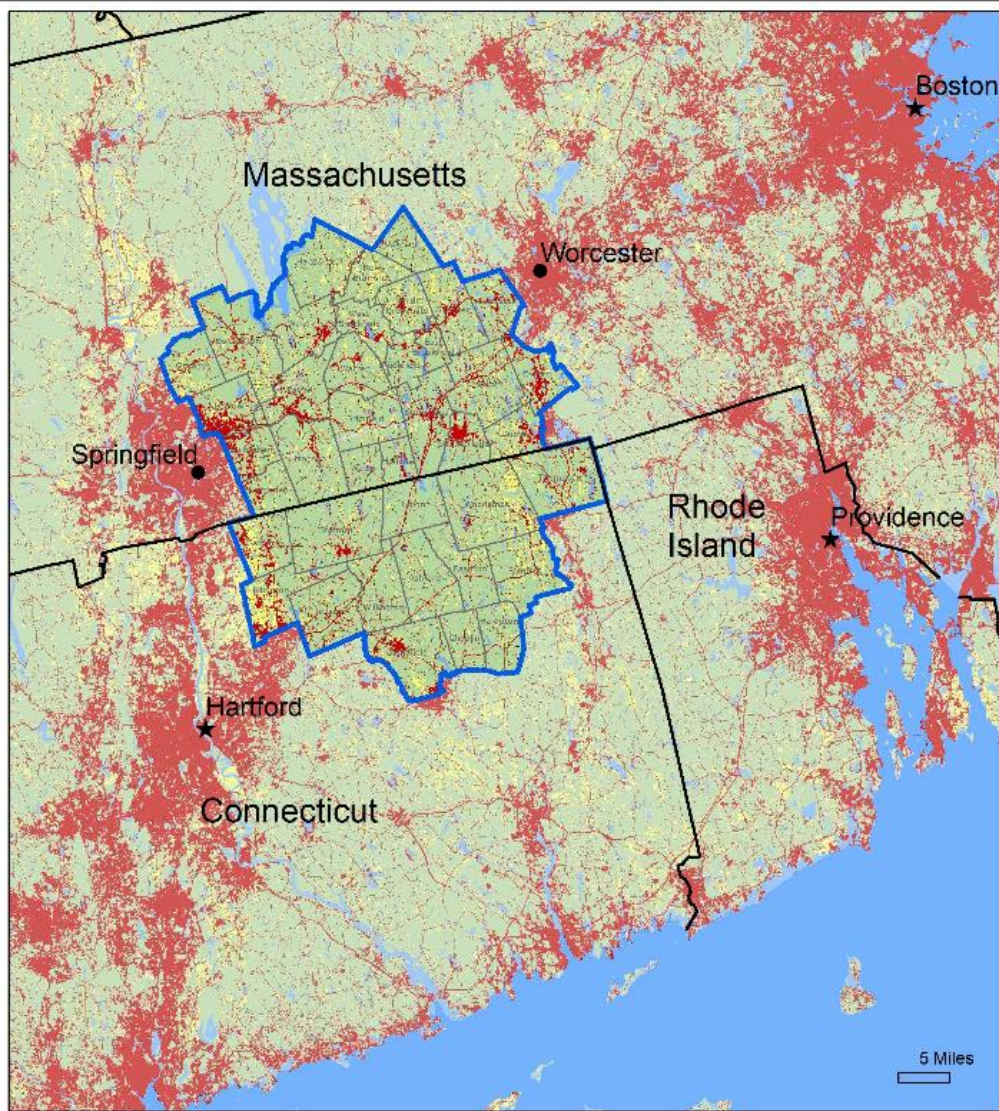
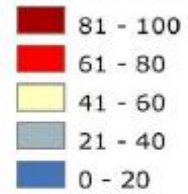
Academe National
Government
State Foundation
Association Artist
Sanctuary Statewide Center Agency Watershed
Business Trust
Bureau Federal International
Regional
Planning Service RCP Nature Individual
Agency Land
Student Commission
Wildlife Service RCP Nature Individual
Bureau Sanctuary Association Artist
Statewide Center Agency Watershed
Trust
Federal International
Regional
Planning Service RCP Nature Individual
Agency Land
Student Commission
Wildlife Service RCP Nature Individual

The Final Map

Focus Area Scores



Focus Area Scores



MassConn Sustainable Forest Partnership



1. Fill in the gaps in protected land (cores AND corridors)

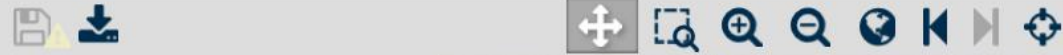
2. Improve transportation to get wildlife and water under roads

3. Help people find their place (geographically, and in the Partnership)

Berkshire Wildlife Linkage partners:

- Berkshire Environmental Action Team
- Berkshire Natural Resources Council
- Berkshire Regional Planning Commission
- DCR
- DFW
- Franklin Land Trust
- Hilltown Land Trust
- Hudson Highlands Land Trust
- Kestrel Land Trust

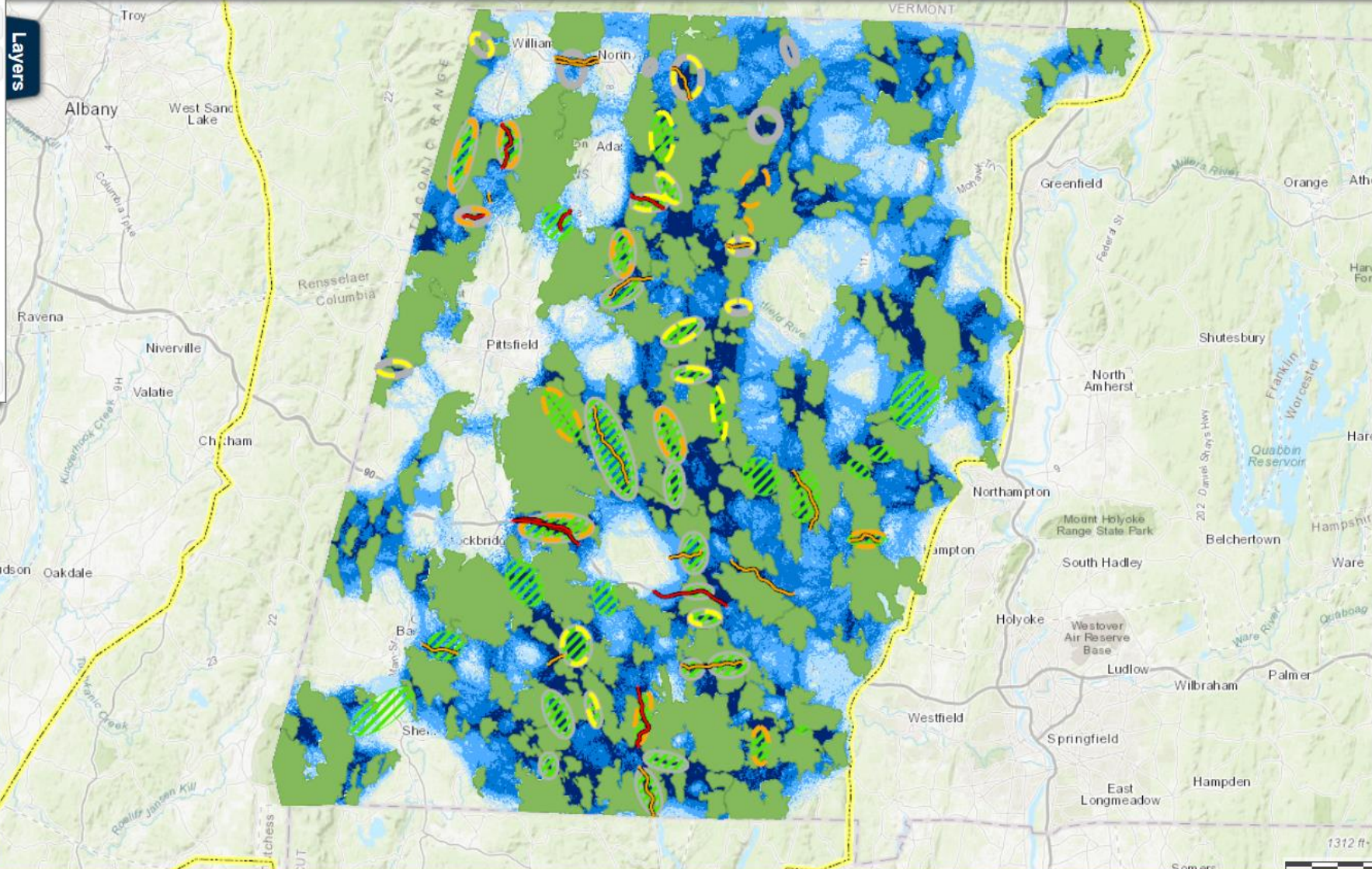
- Mass Audubon
- **MassDOT**
- The Nature Conservancy
- New England Forestry Foundation
- Pioneer Valley Planning Commission
- Sheffield Land Trust
- UMass-Amherst
- Vermont Land Trust
- Weantinogue Heritage Land Trust
- Westfield State University



Drawings Datasets

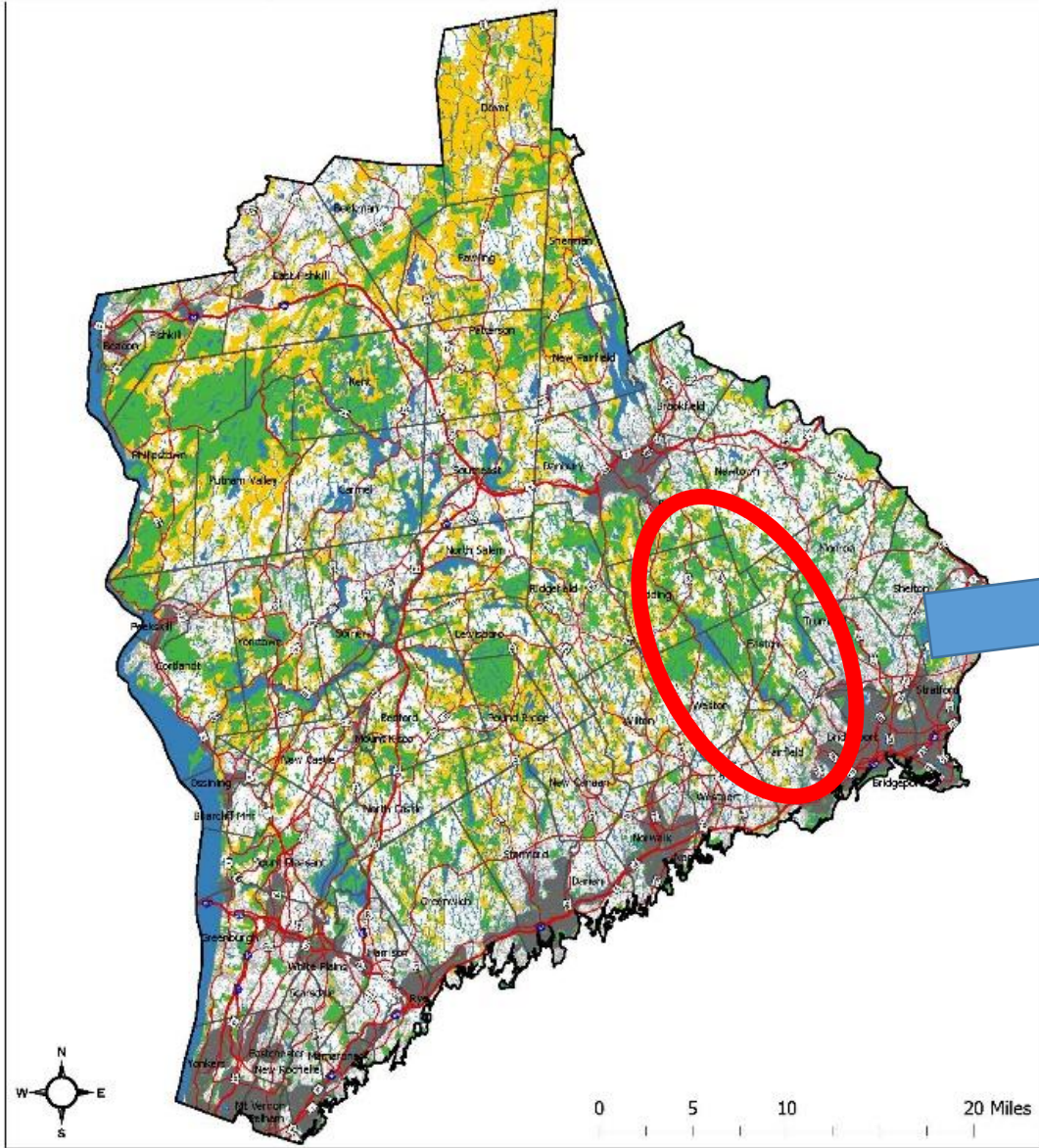
- add datasets
- Berkshire Wildlife Linkage
 - Priority Road Segments
 - Priority Connectivity Areas
 - Habitat Nodes
 - Conductance
 - Berkshire Wildlife Linkage Boundary

Basemaps

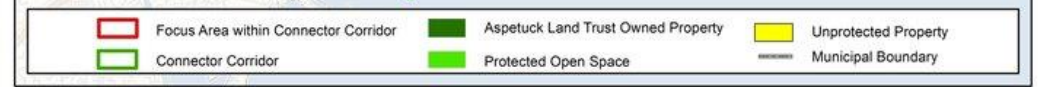
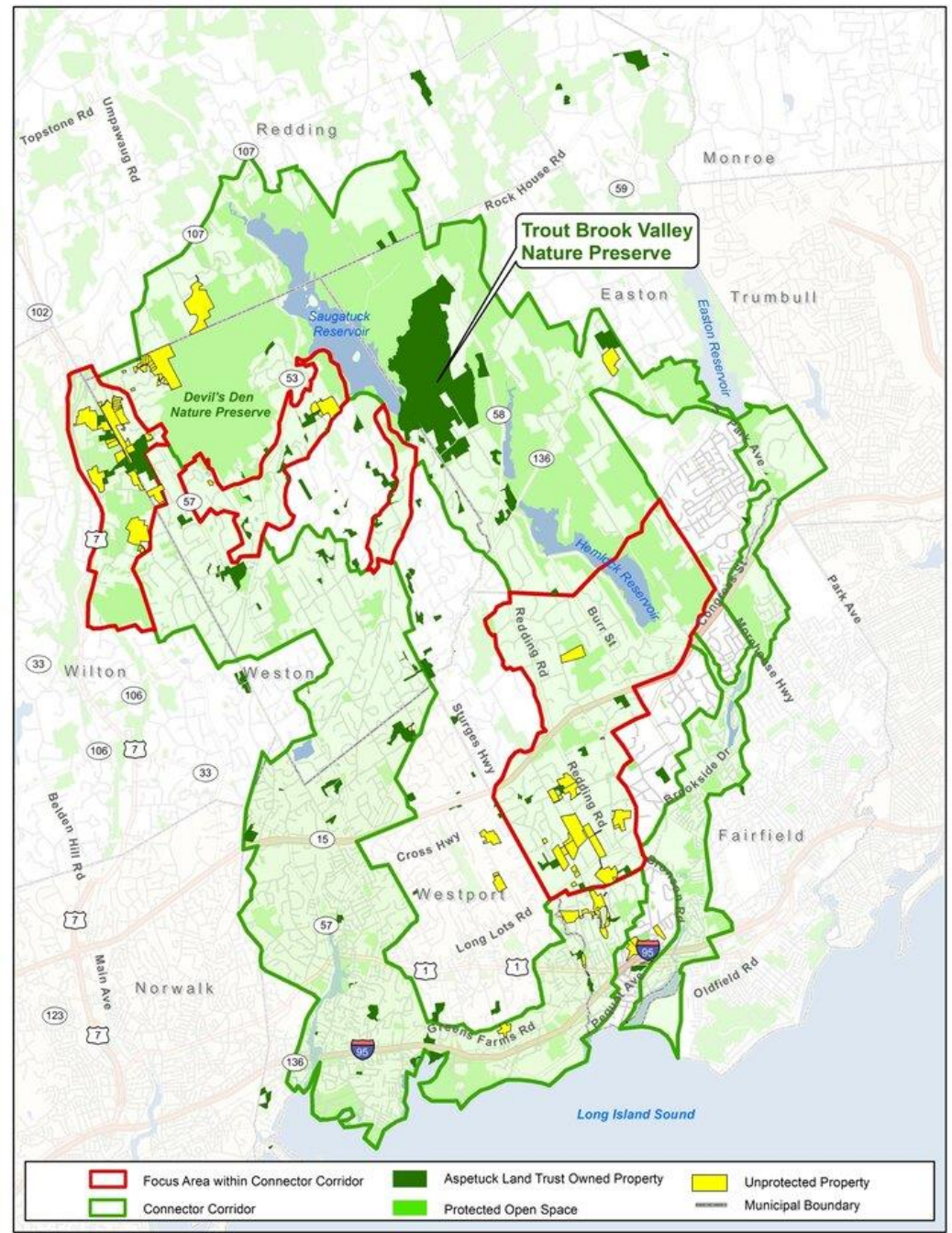


- Priority Road Segments**
Displaying: Tier
 - Tier 1
 - Tier 2
- Critical Linkages II Priority Areas**
Displaying: CL_II
 - Tier 1
 - Tier 2
- TNC Forest Core Priority Areas**
TNC Forest Core Priority Area
- Greens to Hudson Priority Areas**
Greens to Hudson Priority Areas
- Habitat Nodes**
- Conductance**
 - 0.02 - 0.23
 - 0.23 - 0.44
 - 0.44 - 0.60
 - 0.60 - 0.91
- Berkshire Wildlife Linkage Boundary**
Linkage Boundary

Strategic Conservation Map: Exurban and Suburban Regions



*Inclusion of protected properties in this map does not imply that they are open to the public.



THIS MAP IS INTENDED FOR INTERNAL CONSERVATION PLANNING USE BY H2H PARTNERS. PLEASE DO NOT DISTRIBUTE.

H2H Hudson to Housatonic

Our Partners

Now, H2H is a collaboration of dozens of partner organizations. Many of these are land trusts, conservation-focused NGO's, or local governments - but other important members include garden clubs, academic institutions, and more. H2H's diversity in partners is its strength, and though each partner may approach conservation in its locality in slightly different ways, they are all unified in working towards the shared vision we have for our landscape, the greater W&W landscape reaching across New England, and beyond.



Pound Ridge Land Conservancy



NORTH SALEM OPEN LAND FOUNDATION



H2H URBAN MAPPING INITIATIVE

NEXT STEPS – TARGETED FINAL LAYERS

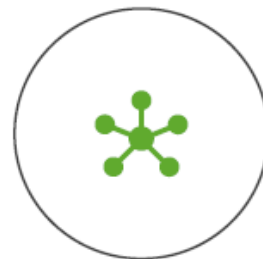
1. PRESERVATION/CONSERVATION

HIGHEST PRIORITY AREAS FOR PROTECTION FROM DEVELOPMENT



2. EQUITABLE ACCESS TO NATURE

IDENTIFYING AREAS IN NEED OF ACCESS TO NATURE



3. CLIMATE CHANGE RISK AREAS

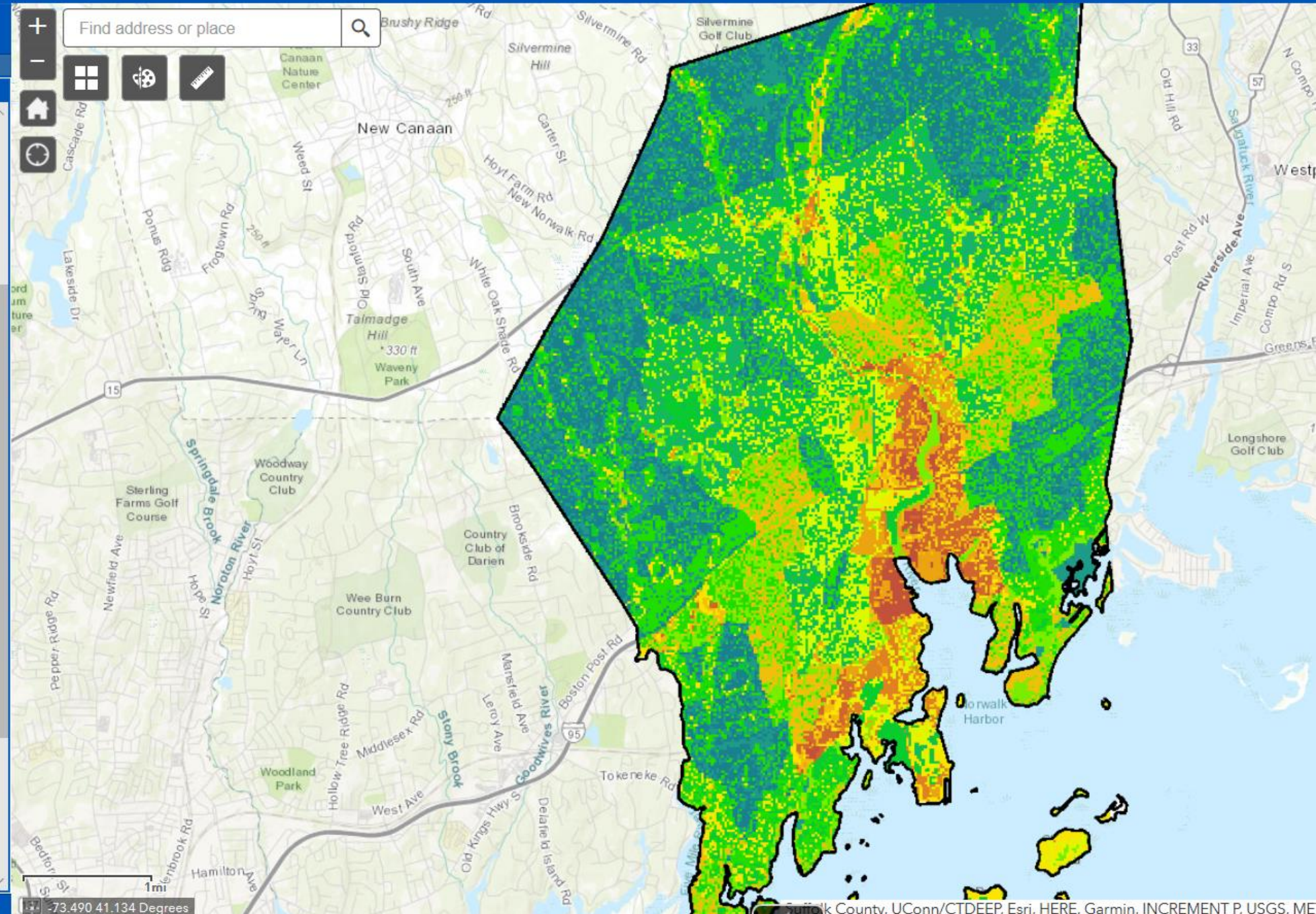
AREAS IN NEED OF PROTECTION TO MITIGATE THE WORST IMPACTS OF CLIMATE CHANGE





Layer List

- Norwalk Watersheds ...
- Norwalk Protected Lands ...
- Norwalk Neighborhoods ...
- Flood Risk ...
- Urban Heat Island ...
- Equity and Social Factors ...
- Ecology ...
- Human Connectivity ...
- Public Health ...
- Recreation ...
- Final Action Maps ...
 - Priority Land for Conservation ...
 - Ensuring Equitable Access to Nature ...
 - Climate Risk Mitigation ...
 - Climate Risk Mitigation Co-Occurrence - Raw Scores ...
 - Climate Risk Mitigation Co-Occurrence - Sliced Scores ...
 - Climate Risk Mitigation 9th Decile ...



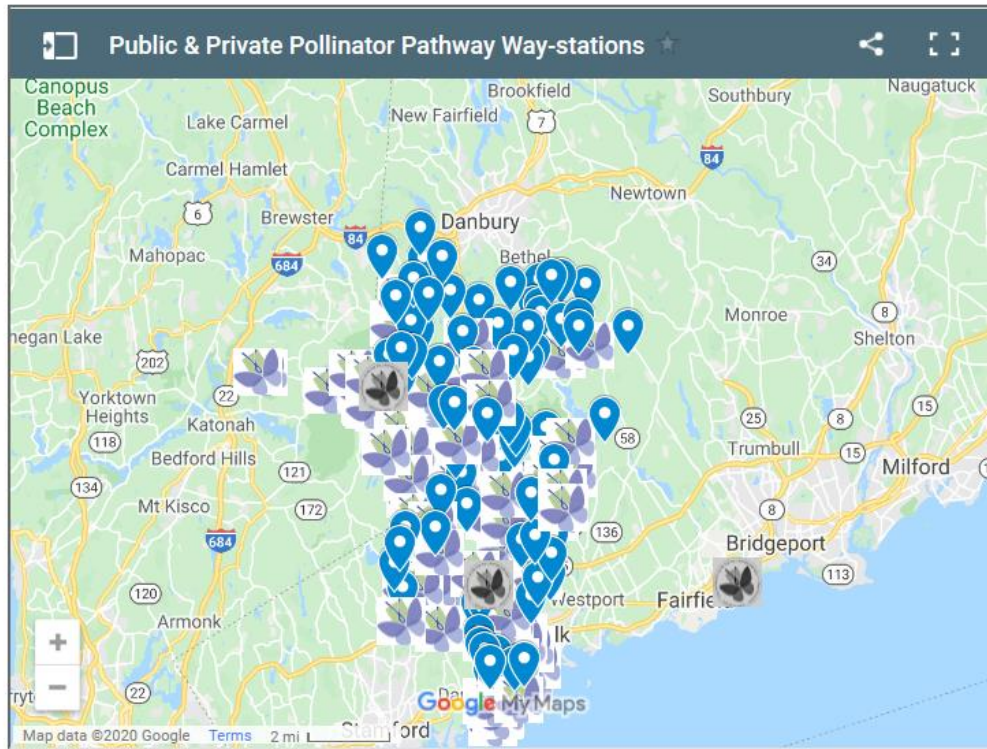
-73.490 41.134 Degrees



Pollinator Pathways

Establishing pollinator-friendly habitats and food sources for bees, butterflies, hummingbirds and other pollinating insects and wildlife

[Home](#) [About](#) [Pollinator Pathways](#) [Your Backyard](#) [Invasive Threats](#) [Resources](#) [Get Involved](#) [Contact](#)



Add your property, a town garden, or a pesticide-free open space in your town to this map of private and public way-stations along the Pollinator Pathway.

- The black and white butterfly logos mark residences that provide a food and shelter for pollinators.
- The green and purple butterfly logos mark public gardens managed by volunteers
- The blue pins mark protected open space that provides pesticide-free native habitat for wildlife, including pollinators.

Email us at info@pollinator-pathway.org and include the address of the property you would like to add.

Towns Along the Pollinator Pathway

Click on your town to see its page.

High Peaks Initiative

- Permanently protected 10,000 acres and have over 10,000 additional acres of conservation projects in the immediate pipeline
- Mapped all recreational trails across the region and conducting an inventory of conditions as a baseline for a climate informed regional trails plan.





[HOME](#)

[ABOUT](#)

[PARTNERS](#)

[TOOLS](#)

[CONVERGENCE](#)

[CONTACT US](#)



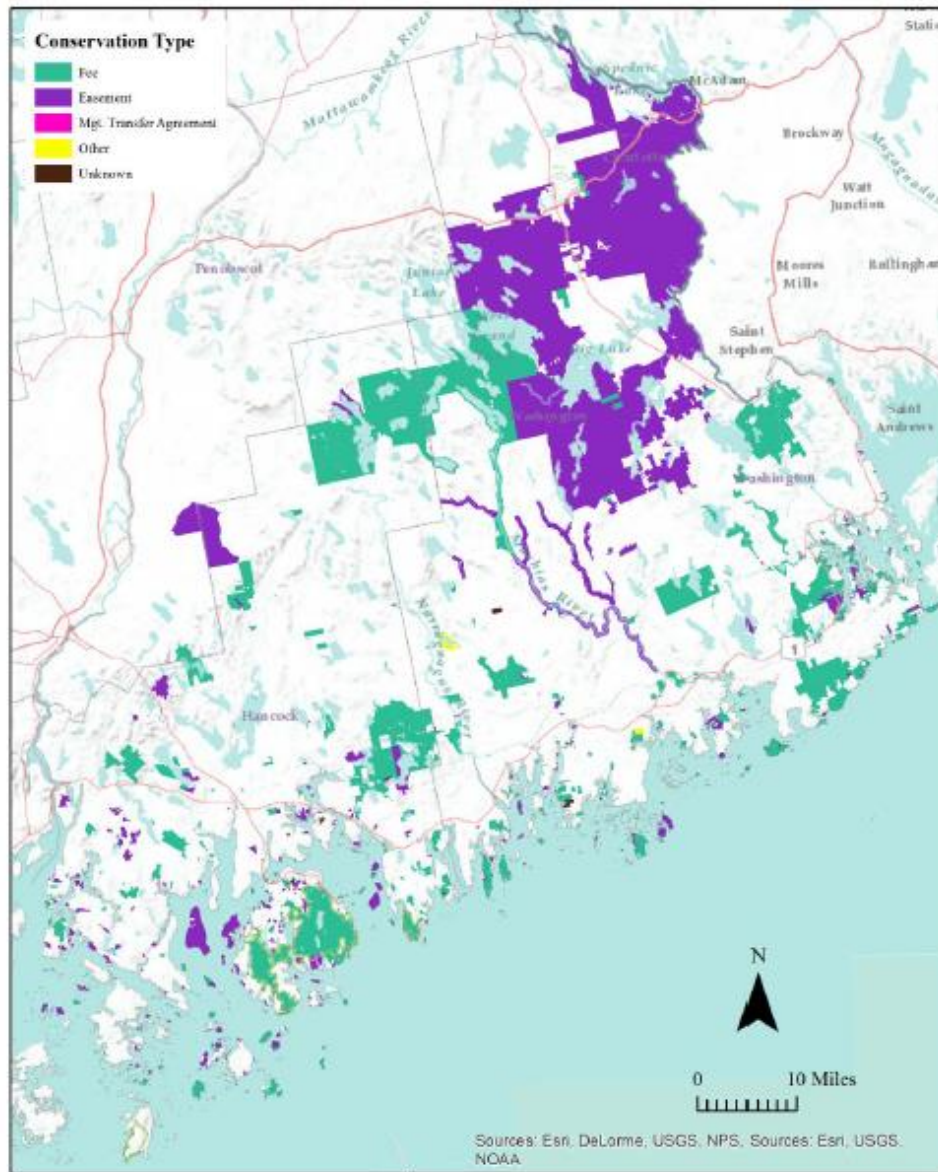
Blue Hill Heritage Trust
Frenchman Bay Conservancy
Downeast Salmon Federation
Maine Coast Heritage Trust
National Park Service, Acadia National Park
Schoodic Institute
Sunrise County Economic Council
Washington County Manager
College of the Atlantic
Cornell University
University of Maine at Machias
University of Maine at Orono

Connecting conservation, research, education, and communities in Downeast Maine

[Full Economic Report: Valuing the Economic Benefits of Conserved Land in Downeast Maine](#)

[Economic Report Executive Summary \(4 pages\)](#)

Conserved Lands by Conservation Type



Sources: Conserved lands data from MEGIS and regional conservation organizations; Land use/land cover from NLCD 2011.

Results

Land Area and Designation

- There are a total of 702,654 acres of conservation land in Downeast Maine, which comprise of 19.6% of the total area. Approximately 58% of that land is located in Washington County.
- 72% of Downeast conserved lands are forestland (Figure 1). About 18% of the land is classified as wetlands (18%), followed by shrub (4.7%), developed (1.1%), open water (1.4%), and grassland (1.0%), and blueberry barrens (0.5%).
- About 57% of conservation land in the region is registered as conservation easement, while 42% is fee acquisition.
- Nearly 60% of the conservation land is under private ownership, while the remaining 40% is public.

Economic Benefits

- Table 1 lists the estimated economic benefits of Downeast conserved land. Figures are listed in total annual values and broken out by benefit category and geographical area.
- Visitor spending provides the largest amount of our monetized benefits, totaling more than \$304 million per annum. More than 95% of that can be directly attributed to the existence of Acadia National Park.
- Recreation is estimated to provide almost \$58 million in benefits per year. Most of this value is attributed to the hunting, fishing, and boating opportunities that is provided by conserved land located throughout the study area.
- The value of carbon sequestered in standing forests on conservation land is estimated to provide about \$42 million per year in benefits to society from mitigating the effects of climate change. Only a small portion of this value is accrued through participation in carbon markets.
- Employment directly associated with managing conservation land is estimated to be at least \$13.9 million per year.
- The commercial harvest of timber and blueberries from conserved land is estimated to be \$17.5 and 4.4 million per year, respectively. This figure illustrates that putting land in conservation does not necessarily eliminate the opportunity for a commercial operation.
- The provision of clean water and drinking water supply are estimated to collectively provide almost \$17 million per year, although we note that this value could be higher if the region faced a higher threat of deteriorating water quality due to land use change.
- The total ecosystem services benefits of Downeast conserved land equates to about \$206/acre/yr. This value falls into the range of similar valuation studies that were conducted for comparable geographical areas, ecosystems, and benefit categories.

Figure 1. Conserved Lands by Conservation Type for Downeast Maine.



A watershed is an area that drains to a common waterway, such as a river. The blue area above comprises the Taunton River Watershed.

For more information, see our website at srpedd.org/rtnw or contact your local Regional Planning Agency:

- Bill Napolitano, SRPEDD**
bnap@srpedd.org, (508) 824-1367 x 315
- Eric Arbeene, OCPC**
earbeene@ocpcrpa.org, (508) 583-1833 x213
- Anne Herbst, MAPC**
aherbst@mapc.org, (617) 933-0781

The Resilient Taunton Watershed Network (RTWN)



Working Together for a Better future
Resilient Communities, Healthy Waters

What we are offering:

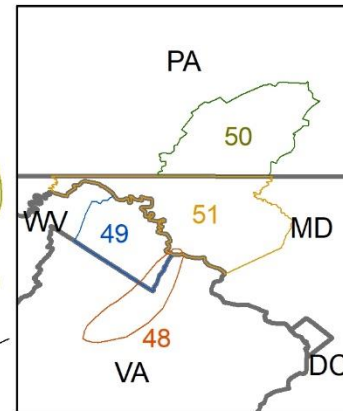
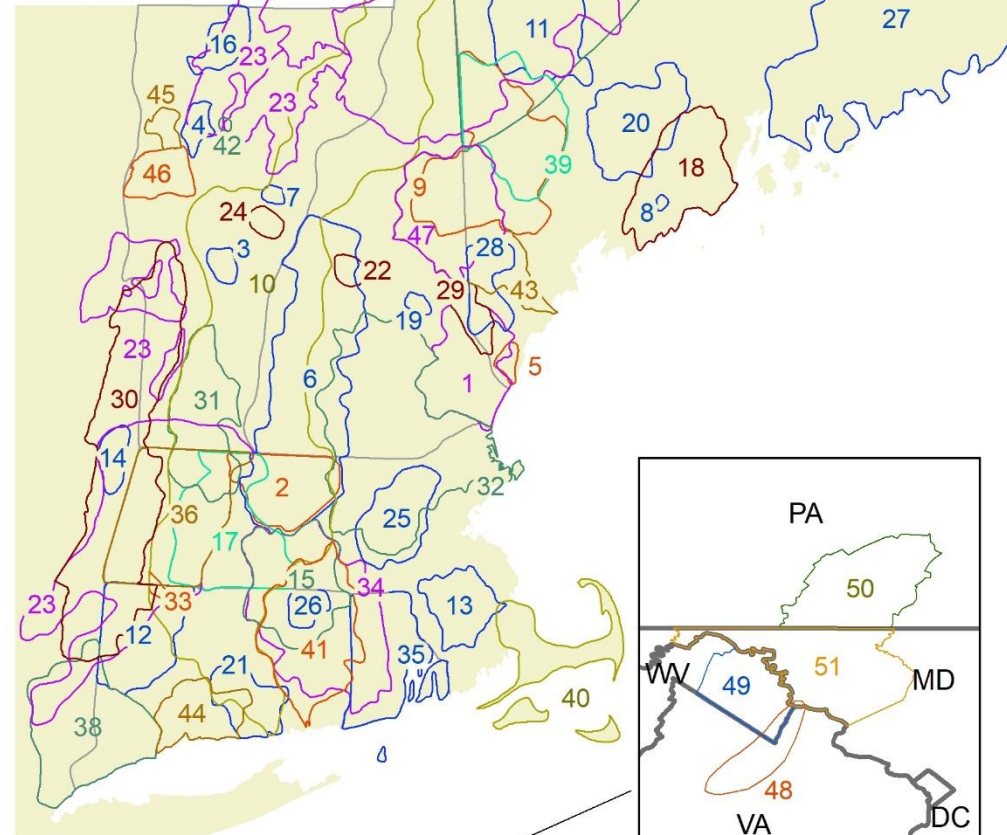
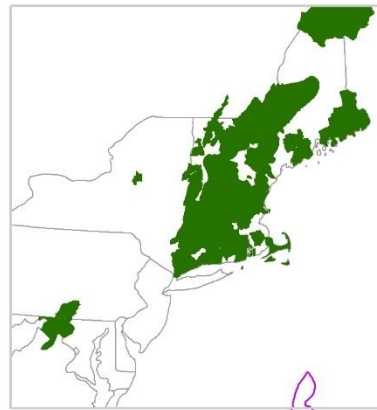
The RTWN has recently received some funding and would be interested in working with towns or groups who are interested to work with us on any of the following:

- **Resilience Roundtables** – facilitated cross community conversations to discuss cost effective solutions to issues you define such as flooding or culvert upgrades
- **Municipal Training Program**
- Use of various **tools** (including mapping and green infrastructure tools)
- **Peer review** of development proposals
- Community Resilience **Self Assessment**
- Assistance identifying ways to meet regulations such as MS4 and the Water Management Act
- Prioritizing **culvert replacements** and redesign /modification for safety, fish passage, flood reduction



Regional Conservation Partnership Network

NETWORK



- 1 - Great Bay Resource Protection Partnership
- 2 - North Quabbin Regional Landscape Partnership
- 3 - Chateaugay No Town Conservation Project
- 4 - Chittenden County Uplands Conservation Project
- 5 - Mt. Agamenticus to the Sea Conservation Initiative
- 6 - Quabbin to Cardigan Partnership
- 7 - Orange County Headwaters Project
- 8 - River-Link
- 9 - Upland Headwaters Alliance
- 10 - Friends of the Silvio O. Conte National Fish and Wildlife Refuge
- 11 - High Peaks Initiative
- 12 - Litchfield Hills Greenprint Collaborative
- 13 - Resilient Taunton Watershed Network
- 14 - Rensselaer Plateau Working Forest Initiative
- 15 - Mass-Conn Sustainable Forest Partnership
- 16 - Cold Hollow to Canada Forest Link Project
- 17 - Forever Farmland Initiative
- 18 - 12 Rivers Conservation Initiative
- 19 - Belknap Range Conservation Coalition
- 20 - Kennebec Woodland Partnership
- 21 - Lower CT River and Coastal Region Land Trust Exchange
- 22 - Newfound Land Conservation Partnership
- 23 - Staying Connected Initiative
- 24 - Taylor Valley Conservation Project
- 25 - Metrowest Conservation Alliance
- 26 - Quiet Corner Initiative
- 27 - Downeast Conservation Network
- 28 - Forest Works!
- 29 - Salmon Falls Watershed Collaborative
- 30 - Berkshire-Taconic Regional Conservation Partnership
- 31 - MA-VT Woodlands Partnership
- 32 - Merrimack Conservation Partnership
- 33 - Sandy Brook Conservation Corridor
- 34 - Southern New England Heritage Forest Partnership
- 35 - Rhode Island Woodland Partnership
- 36 - Berkshire Wildlife Linkage Partnership
- 37 - Maine Mountain Collaborative
- 38 - Hudson to Housatonic Regional Conservation Partnership
- 39 - Maine West
- 40 - Massachusetts Coastal Pine Barrens Partnership
- 41 - Thames River Basin Partnership
- 42 - Shutesville Hill Wildlife Corridor Project
- 43 - Saco Watershed Collaborative
- 44 - South Central Regional Land Conservation Alliance
- 45 - Champlain Valley Conservation Partnership
- 46 - Mid-Champlain Valley RCP
- 47 - Saco Headwaters Alliance
- 48 - Blue Ridge Conservation Alliance
- 49 - Safe Water Conservation Collaborative
- 50 - South Mountain Conservation Landscape
- 51 - Heart of Maryland Conservation Alliance

RCPs by Stage of Development	New England and Eastern New York	Mid-Atlantic	Total RCPs
Emerging RCPs	6	1	7
Maturing RCPs	13	3	16
Conserving RCPs	27	1	28
Quiet/Transitory RCPs	4	0	4
Total Number of RCPs	50	5	55
Terminated RCPs	5		

How do RCPs overcome challenges?

- Funding
 - Coordination
 - Activities
 - Land Protection
- Keeping Partners Engaged
 - Collaborative governance
 - Give-get conversations
 - Partner distinctions
 - Success
- Succeeding at Scale
 - Follow the Steps but be ready to improvise
 - Solve the “so what?”
- Managing complexity and growth to innovate and build momentum within capacity
 - Communication
 - Decision-making
 - Patience
 - Cultivate leadership

Roles of the RCP Network in RCPs' Development and Collaboration

- Governance

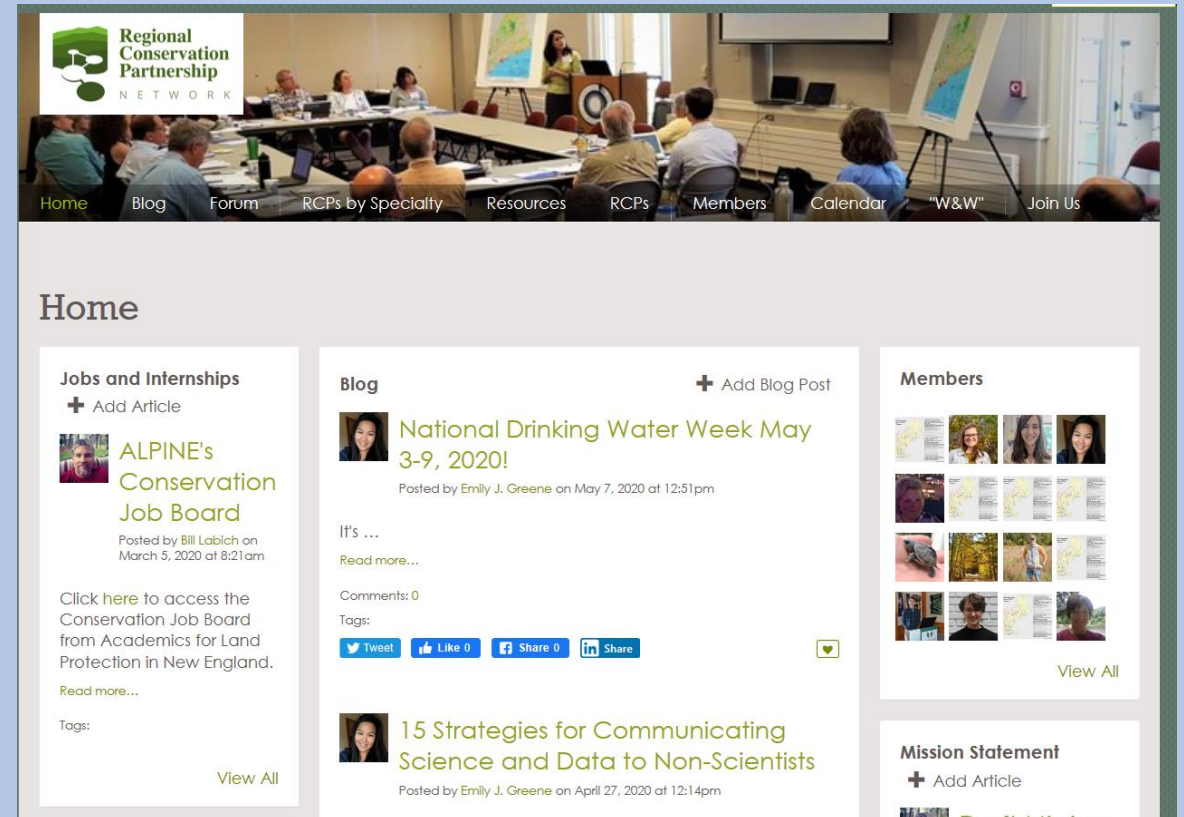
- Host Partner
- Coordinator
- Steering Committee
- Fundraising Committee
- Five-Year Strategies

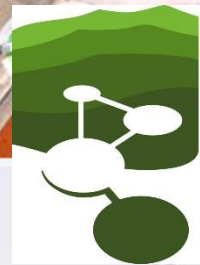
- Timeline

- First RCP Gathering (40 attendees) 2010
- First Multi-RCP Collaborative 2011
- RCP Network Forms 2012
- RCPs in New England published 2013
- RCP Innovation Grant Program 2014
- RCP Handbook, Steering Committee, LI Sound Watershed RCPP 2015
- Northern A.T. Landscape Partnership 2016
- Fundraising Committee 2017
- 10th Annual RCP Network Gathering (375 attendees) 2019

Convening and Peer Learning Network

- Monthly Coordinator Calls
- RCPNetwork.org
- Small –grants program
- Annual RCP Coordinators Meeting and RCP Network Gathering





**Regional
Conservation
Partnership**
NETWORK

2019
RCP NETWORK
Gathering





RCP Network Science Delivery Workshops on CT LCD, NALCC Data Sets, and Guidance Documents Sept. 2014 - April 2015



- 515 Participant-hours
- 22 RCPs ★



Conservation Finance Tools and Approaches

- Turnkey RCPP Administration Processes and Materials with Healthy Forest Reserve Program
- Pooled Match Inventory
- Jessie B. Cox Charitable Trust

<https://www.rcpnetworkpooledmatch.net/why-should-i-participate/>



The screenshot shows a website page for the Pooled Match Inventory. The header features a navigation menu with links for Home, About, Active Inventories, Submit Match, and Contact Us. The main content area is titled "POOLED MATCH INVENTORY" with the tagline "Double Your Conservation Impact". Below this, there is a section titled "WHY SHOULD YOU PARTICIPATE?" which includes a sub-heading "Double the Conservation Impact of Land Protection" and two paragraphs of text explaining the program's benefits. At the bottom of the page, there is a logo for the Regional Conservation Partnership Network and the website URL www.rcpnetwork.org.

POOLED MATCH INVENTORY

Double Your Conservation Impact

Home About Active Inventories Submit Match Contact Us


WHY SHOULD YOU PARTICIPATE?

Double the Conservation Impact of Land Protection

The Pooled Match Inventory is a new conservation finance tool that turns completed conservation easements or restrictions into more federal funding to protect other land.

No matter if you are a land trust professional, a landowner considering whether it's the right time to conserve your land, or you've already protected your land with an easement, you can help make it possible for other owners to conserve their land too.

WHO WE ARE



Regional Conservation Partnership NETWORK

www.rcpnetwork.org

Wildlands & Woodlands

A Vision for the New England Landscape

Find us on  



Investing in Regional Conservation: A Model from New England

To accelerate the pace of land conservation in New England, the Jessie B. Cox Charitable Trust committed \$1.1 million over three years in support of developing Regional Conservation Partnerships. In partnership with Highstead, the Cox Trust created two grant programs:

Donated Land and Easement Grant Program

- ▶ 6 awards of \$100,000 each to cover transaction costs like appraisals and surveys
- ▶ Each served as seed funds granted to RCPs to incentivize owners of priority lands to donate easements or provide deep bargain sales

RCP Innovation Program

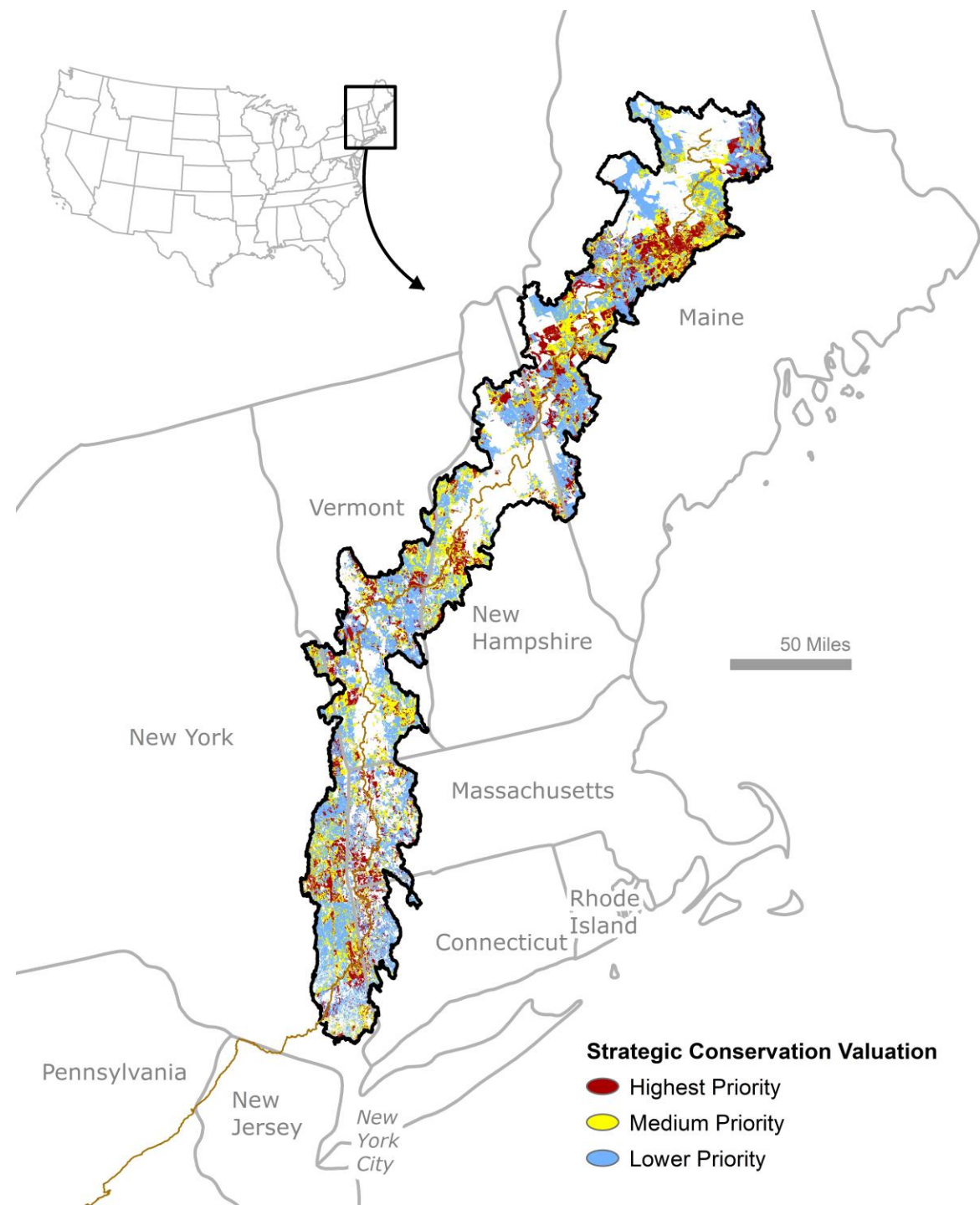
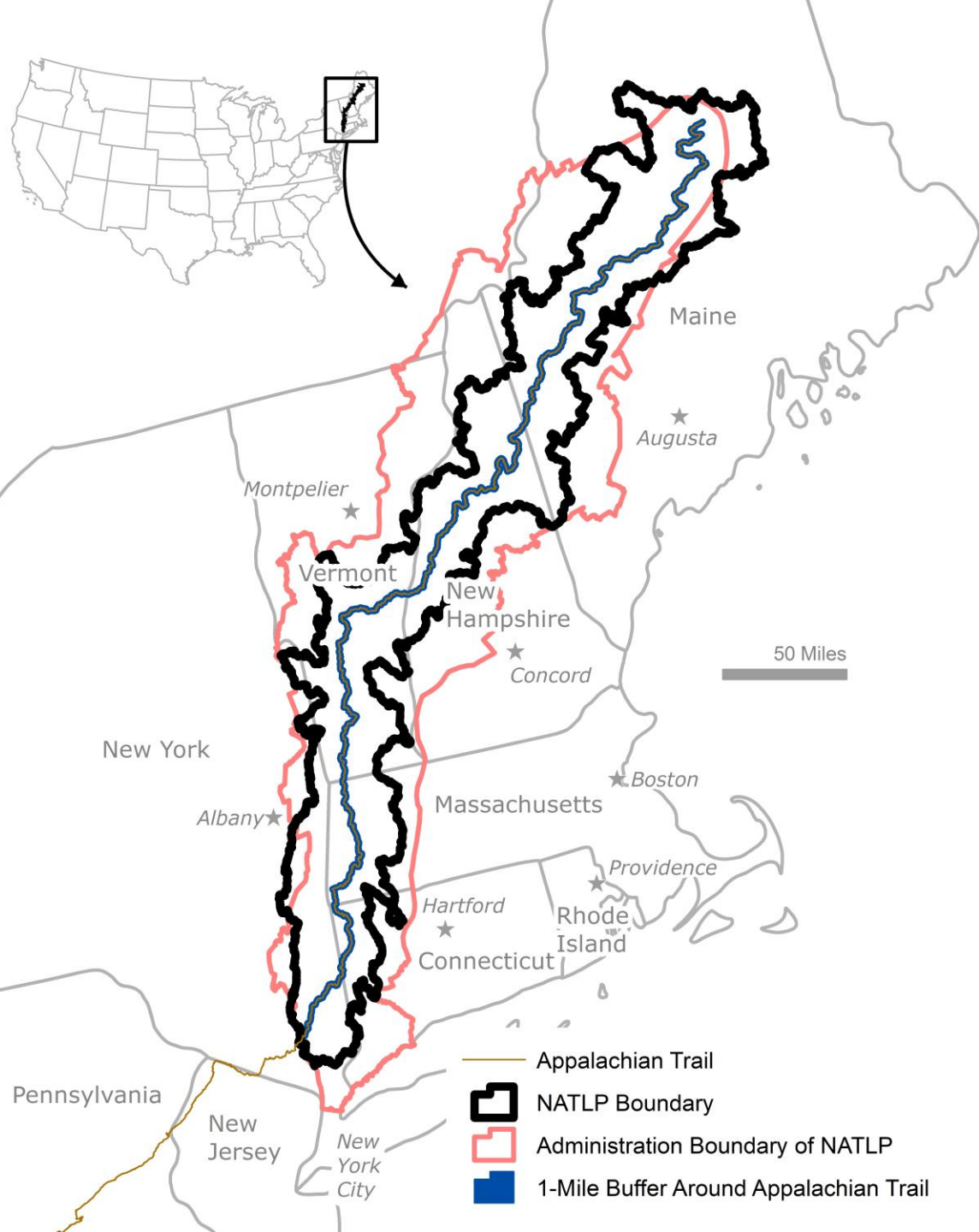
- ▶ 14 awards of \$20,000 each
- ▶ Built capacity of RCPs to conserve more land, pilot new projects and conservation tools, develop new landowner outreach projects, engage in strategic planning and priority setting, plan and initiate capital campaigns

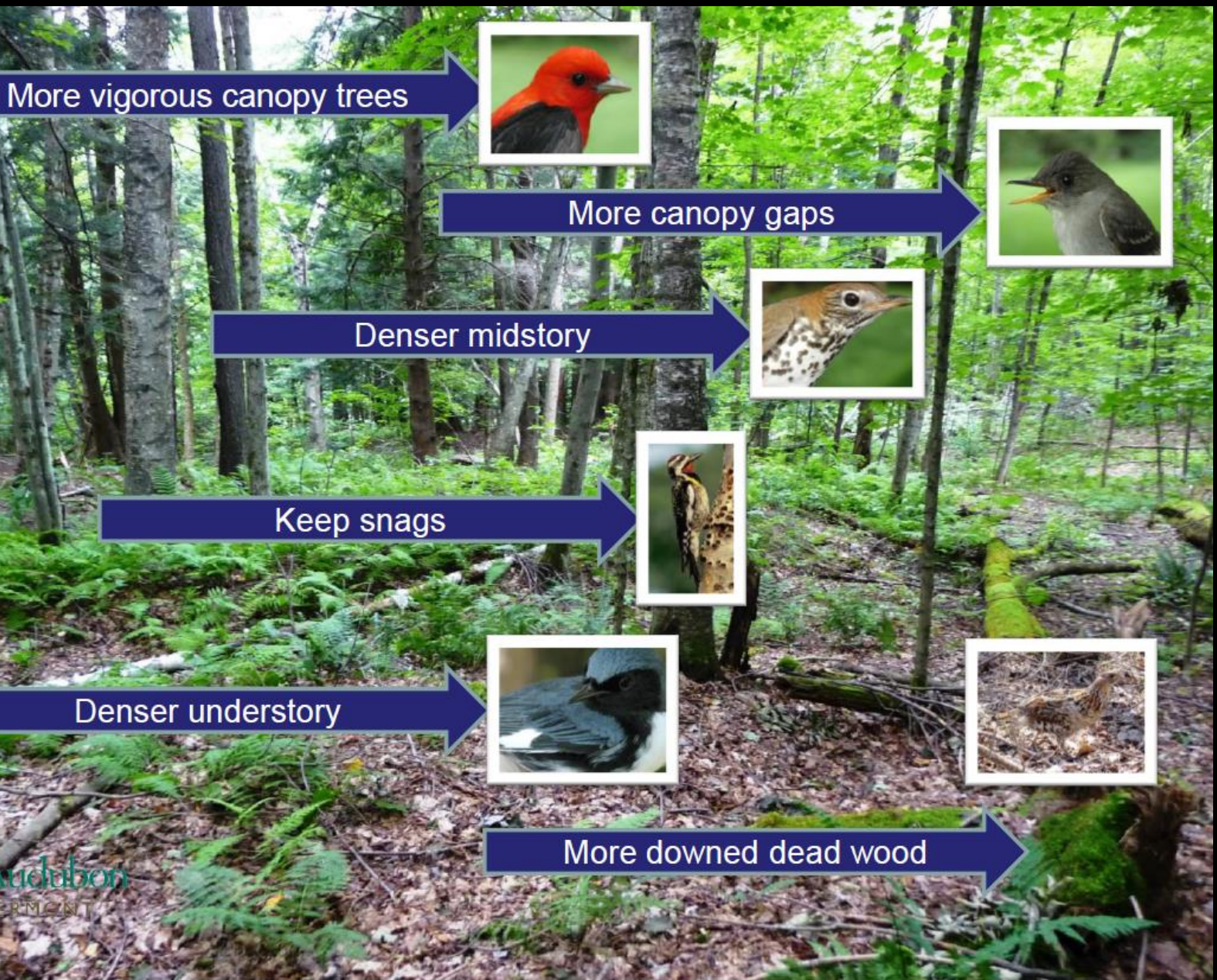


Facilitate Collaboration Among RCPs and with Orgs and Networks

- Northern Appalachian Trail Landscape Partnership
- Northeast Bird Habitat Conservation Initiative
- Uplands to Lowlands RCPP







More vigorous canopy trees



More canopy gaps



Denser midstory



Keep snags



Denser understory



More downed dead wood



suchubon
PRACTICE

Northeast Regional Pilot Demonstration Project to Strengthen Forest Product Markets, Forest Stewardship, and Forest Conservation - Task 2: New York -New England Family Forest Owner Engagement Initiative

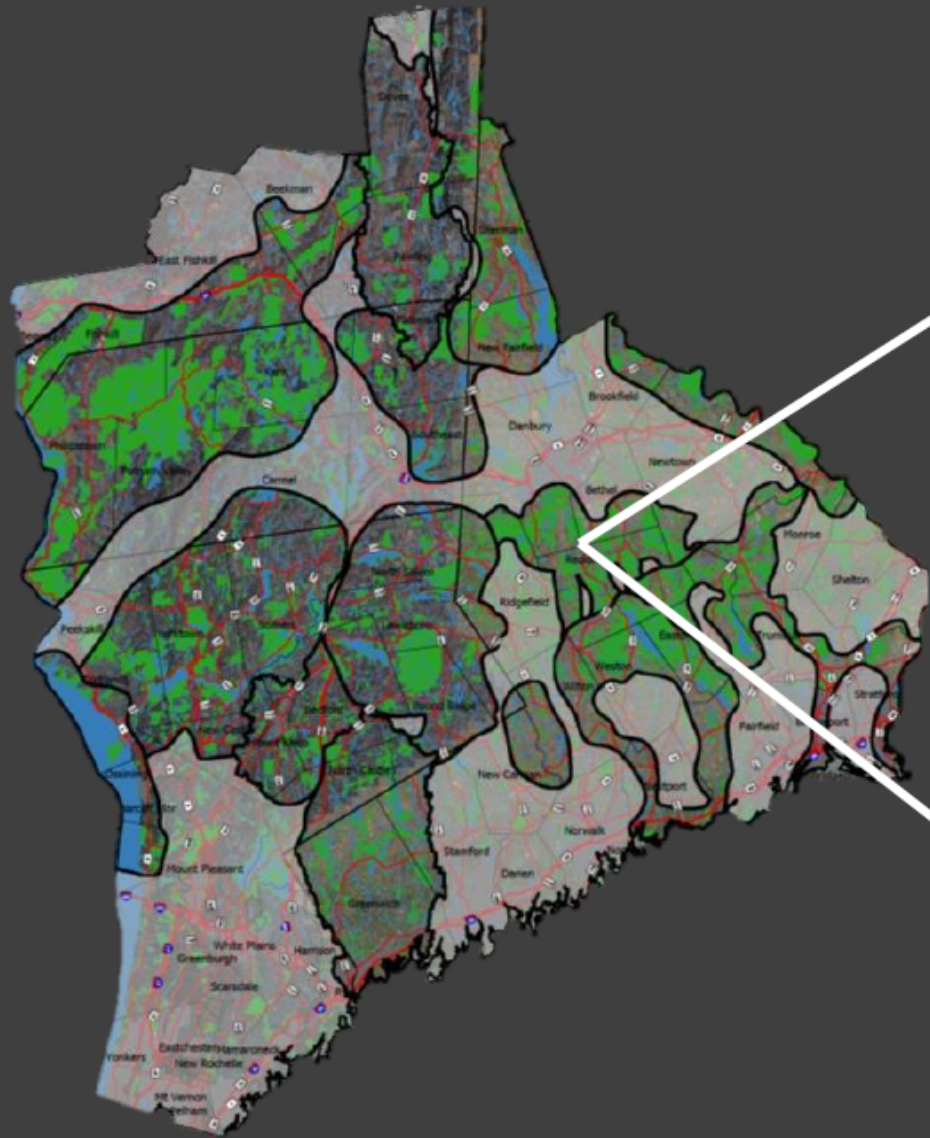
Final Report Summary - November, 2014.

Prepared by Bill Labich, Highstead Foundation

Highstead Dedicated to conserving New England's natural landscapes

State North East Foresters Association
MAINE NEW HAMPSHIRE VERMONT NEW YORK
NEFA
The State Foresters cooperating with the US Forest Service State and Private Forestry

ID forest and grassland patches of highest habitat value and greatest threat



Targeted land protection and stewardship actions

Start with RCP Priorities

eBird
Land Use and Cover
Future Scenarios



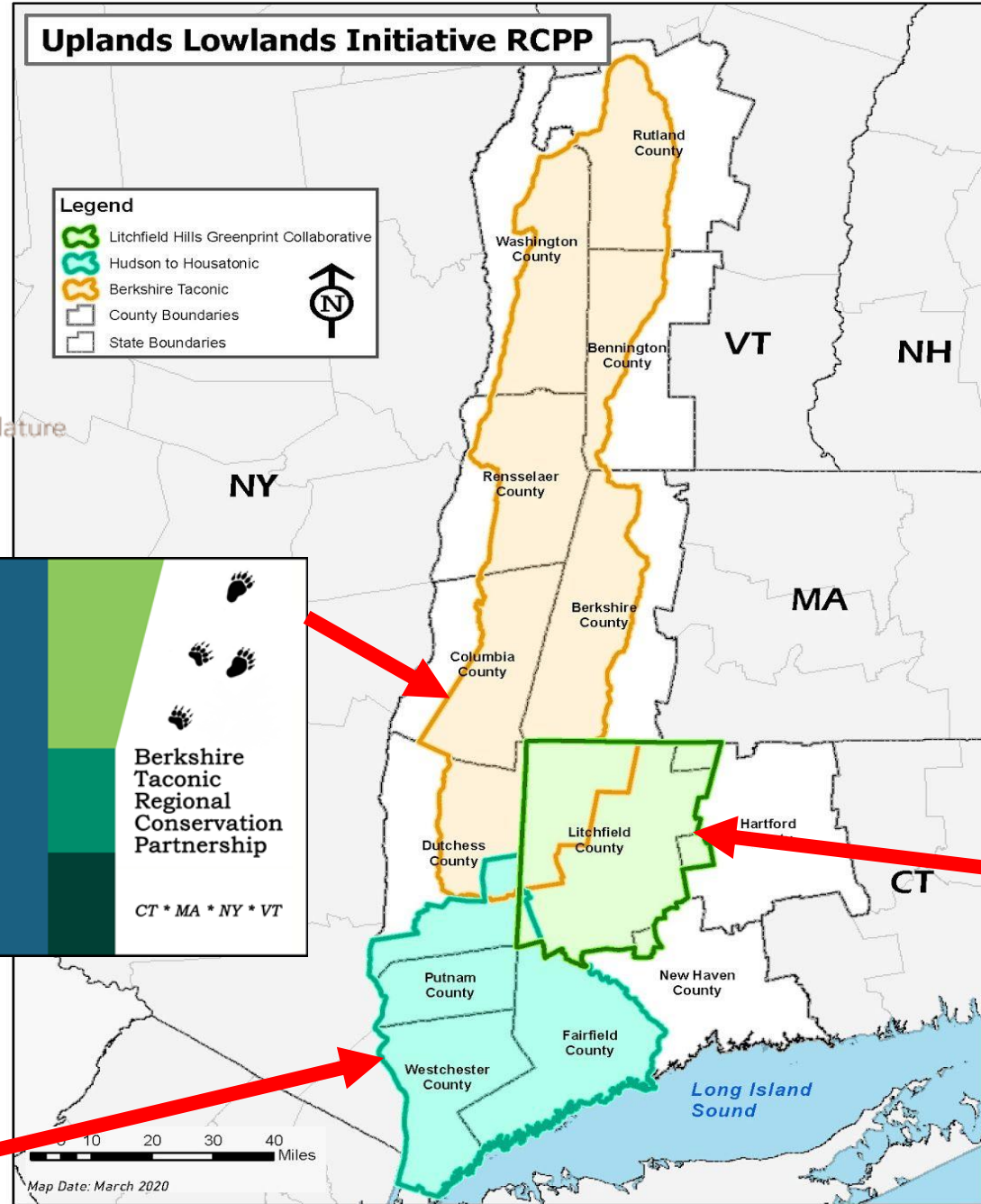
Uplands Lowlands Initiative RCPP

Legend

- Litchfield Hills Greenprint Collaborative
- Hudson to Housatonic
- Berkshire Taconic
- County Boundaries
- State Boundaries




Berkshire Taconic Regional Conservation Partnership
CT * MA * NY * VT



Map Prepared by: Stacy Deming, GISP-Housatonic Valley Association-Cornwall Bridge, CT

Academics for Land Protection in New England

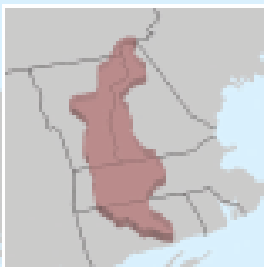
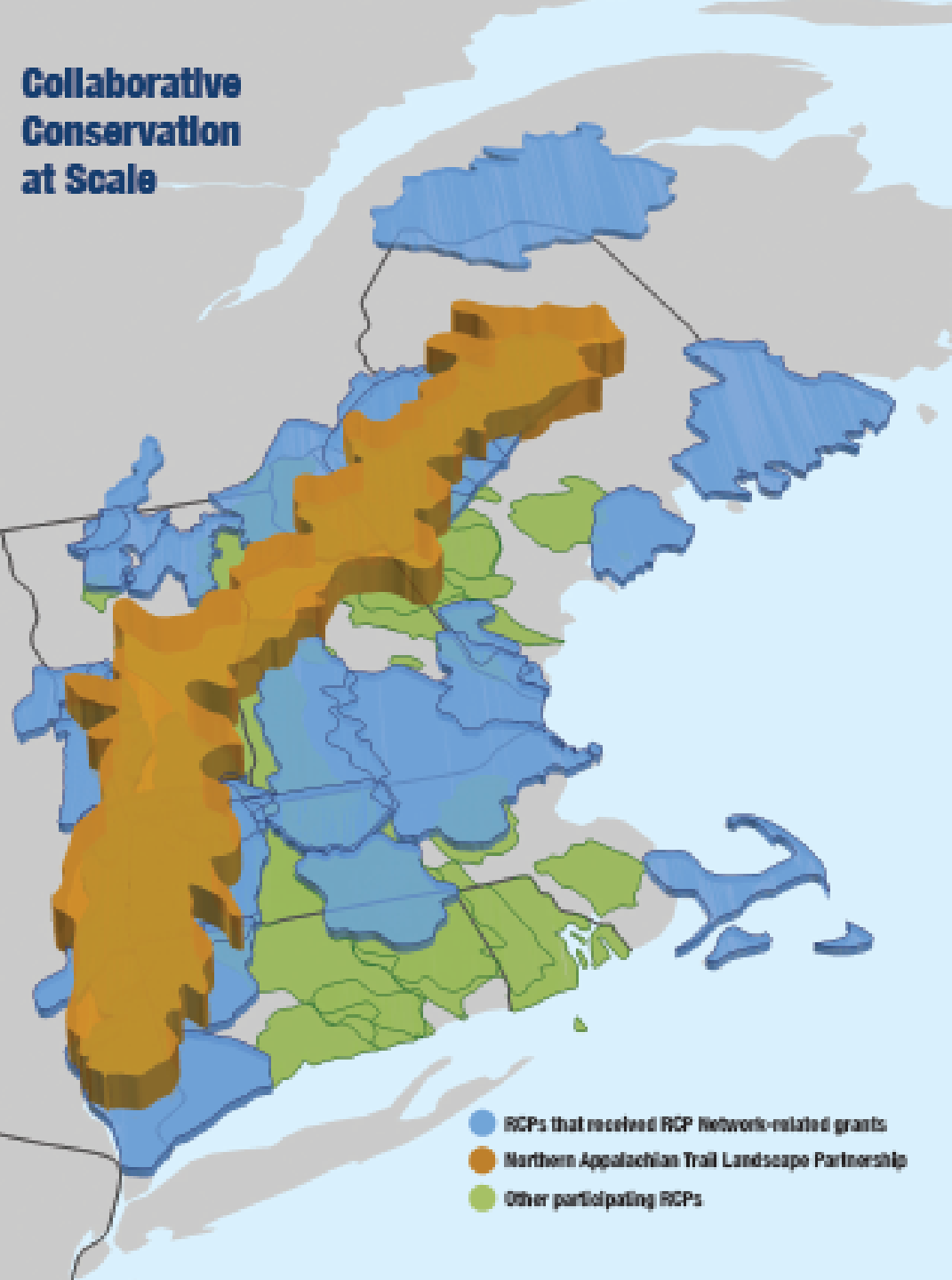
- **ALPiNE**: emerging network that seeks to explore & expand the role that academic institutions in New England play in conserving the natural heritage of the region...

“Connect, collaborate, conserve”

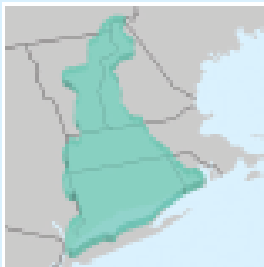
Catalyze the pace & scale of
conservation...



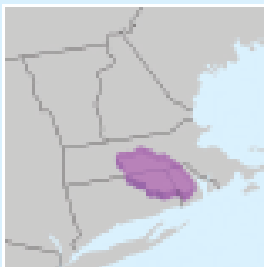
Collaborative Conservation at Scale



\$5 million: Friends of Silvio Conte National Fish and Wildlife Refuge



\$10 million: Long Island Sound Watershed RCP Program



\$6 million: Southern New England Heritage Forest Partnership

Network Outcomes

The RCP Network and its partners have created capacity and scale for many projects throughout the region. Here are some examples.

START-UP & TRAINING PROGRAMS

- The RCP Handbook outlines steps to creating and managing a successful RCP. It is used by RCPs throughout the East Coast.
- The annual RCP Network Gathering advances collaborative regional conservation initiatives.
- We provide one-on-one support and monthly RCP Coordinator Calls to RCPs.

CROSS-BOUNDARY INITIATIVES

- We organized the 10 million-acre **Northern Appalachian Trail Landscape Partnership** of 11 RCPs to engage a broad spectrum of social, economic, and environmental sectors with the goal of protecting 1.4 million acres. ●
- By offering free training and peer learning opportunities to state foresters and land trusts, we have helped RCPs reach and engage more landowners throughout the region.
- In coordination with the Cornell Lab of Ornithology and the RCPs, we are supporting the state Audubon chapters (PA-ME) to sustain Wood Thrush and American Kestrel at the population scale.

FUNDRAISING & CAPACITY-BUILDING

- We led the RCP effort to secure over **\$21 million in funding** from new federal programs, such as the State and Private Forestry's Landscape Scale Restoration Grants and the Natural Resource Conservation Services RCP Program, advancing easements, stewardship, and landowner education. ●
- With Jessie B. Cox Trust and other regional partners, we spread the use of transaction cost funds, climate-informed strategic conservation planning, and collaborative capital campaigns from two to multiple RCPs.
- All of these efforts helped 25 RCPs on a faster path to achieving their missions, advancing easements, stewardship, and landowner education. ●

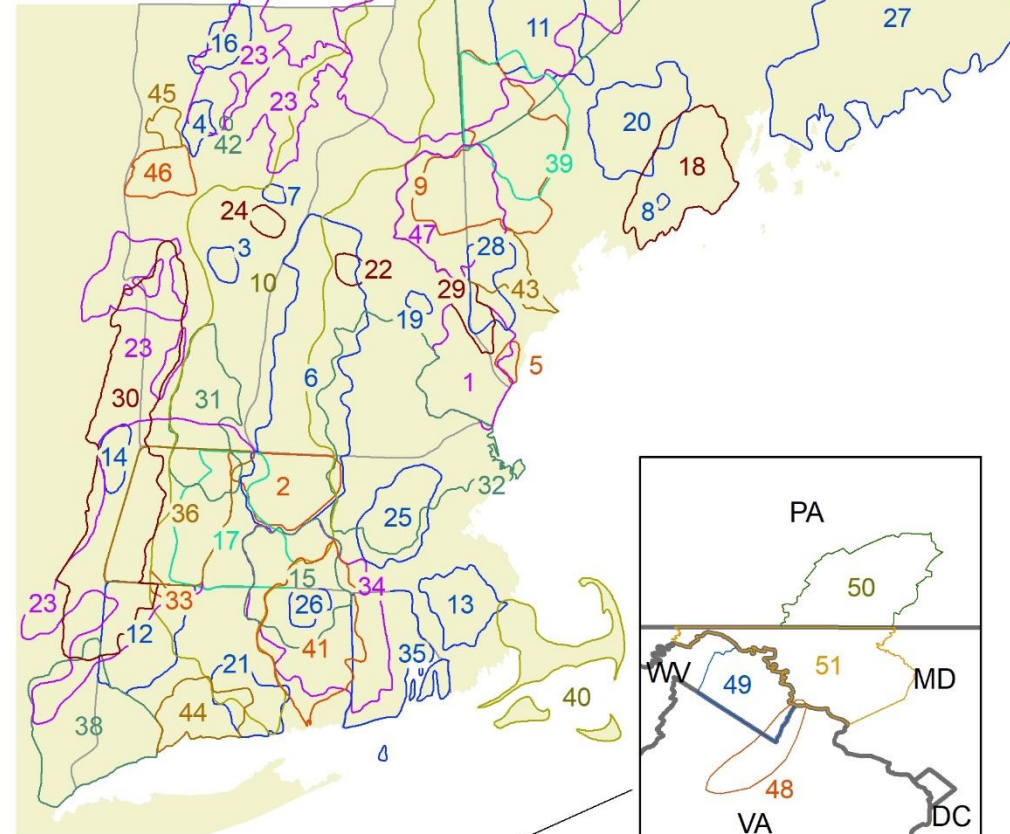
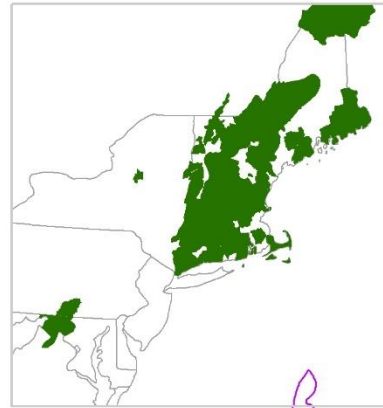
DATA-DRIVEN CLIMATE COMMUNICATIONS

- With Open Space Institute and the U.S. Fish and Wildlife Service, we helped 16 RCPs use the latest spatial data in climate-focused strategic conservation planning and communications.
- Under the Obama administration's funding for Fish & Wildlife Service activities, we translated scientific data into talking points that the RCPs used in their public communication efforts.



Regional Conservation Partnership Network

NETWORK



- 1 - Great Bay Resource Protection Partnership
- 2 - North Quabbin Regional Landscape Partnership
- 3 - Chateaugay No Town Conservation Project
- 4 - Chittenden County Uplands Conservation Project
- 5 - Mt. Agamenticus to the Sea Conservation Initiative
- 6 - Quabbin to Cardigan Partnership
- 7 - Orange County Headwaters Project
- 8 - River-Link
- 9 - Upland Headwaters Alliance
- 10 - Friends of the Silvio O. Conte National Fish and Wildlife Refuge
- 11 - High Peaks Initiative
- 12 - Litchfield Hills Greenprint Collaborative
- 13 - Resilient Taunton Watershed Network
- 14 - Rensselaer Plateau Working Forest Initiative
- 15 - Mass-Conn Sustainable Forest Partnership
- 16 - Cold Hollow to Canada Forest Link Project
- 17 - Forever Farmland Initiative
- 18 - 12 Rivers Conservation Initiative
- 19 - Belknap Range Conservation Coalition
- 20 - Kennebec Woodland Partnership
- 21 - Lower CT River and Coastal Region Land Trust Exchange
- 22 - Newfound Land Conservation Partnership
- 23 - Staying Connected Initiative
- 24 - Taylor Valley Conservation Project
- 25 - Metrowest Conservation Alliance
- 26 - Quiet Corner Initiative
- 27 - Downeast Conservation Network
- 28 - Forest Works!
- 29 - Salmon Falls Watershed Collaborative
- 30 - Berkshire-Taconic Regional Conservation Partnership
- 31 - MA-VT Woodlands Partnership
- 32 - Merrimack Conservation Partnership
- 33 - Sandy Brook Conservation Corridor
- 34 - Southern New England Heritage Forest Partnership
- 35 - Rhode Island Woodland Partnership
- 36 - Berkshire Wildlife Linkage Partnership
- 37 - Maine Mountain Collaborative
- 38 - Hudson to Housatonic Regional Conservation Partnership
- 39 - Maine West
- 40 - Massachusetts Coastal Pine Barrens Partnership
- 41 - Thames River Basin Partnership
- 42 - Shutesville Hill Wildlife Corridor Project
- 43 - Saco Watershed Collaborative
- 44 - South Central Regional Land Conservation Alliance
- 45 - Champlain Valley Conservation Partnership
- 46 - Mid-Champlain Valley RCP
- 47 - Saco Headwaters Alliance
- 48 - Blue Ridge Conservation Alliance
- 49 - Safe Water Conservation Collaborative
- 50 - South Mountain Conservation Landscape
- 51 - Heart of Maryland Conservation Alliance

Contact

Bill Labich, Senior Conservationist, Highstead Foundation and
Coordinator, RCP Network

- blabich@highstead.net
- www.highstead.net

Other websites mentioned in my slides

- www.rcpnetwork.org
- www.rcpnetworkpooledmatch.net
- www.wildlandsandwoodlands.org
- www.llisw-rcpp.com/forests.html



Land Conservation Conference

2020 Vision & Beyond:

Climate, Conservation & Collaboration

Thanks to Our Sponsors!

***Lead Sponsor of
Forever Maryland***



Presenting Sponsor

Helena Foundation

James and Sylvia Earl

Webinar Champion



**Ecosystem
Investment
Partners**

Webinar Advocate



Webinar Supporter



Webinar Backer

Merritt Pridgeon