

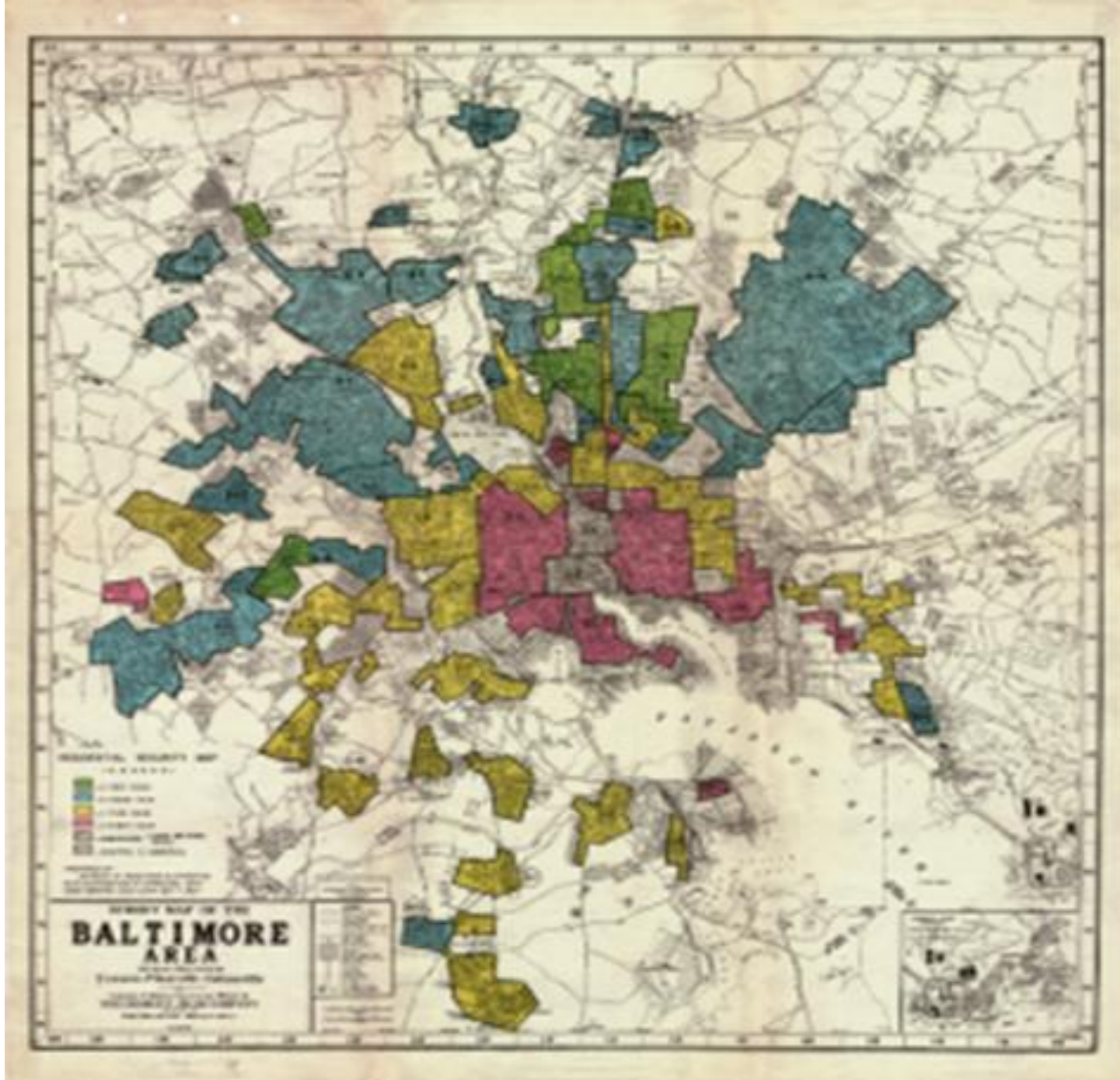


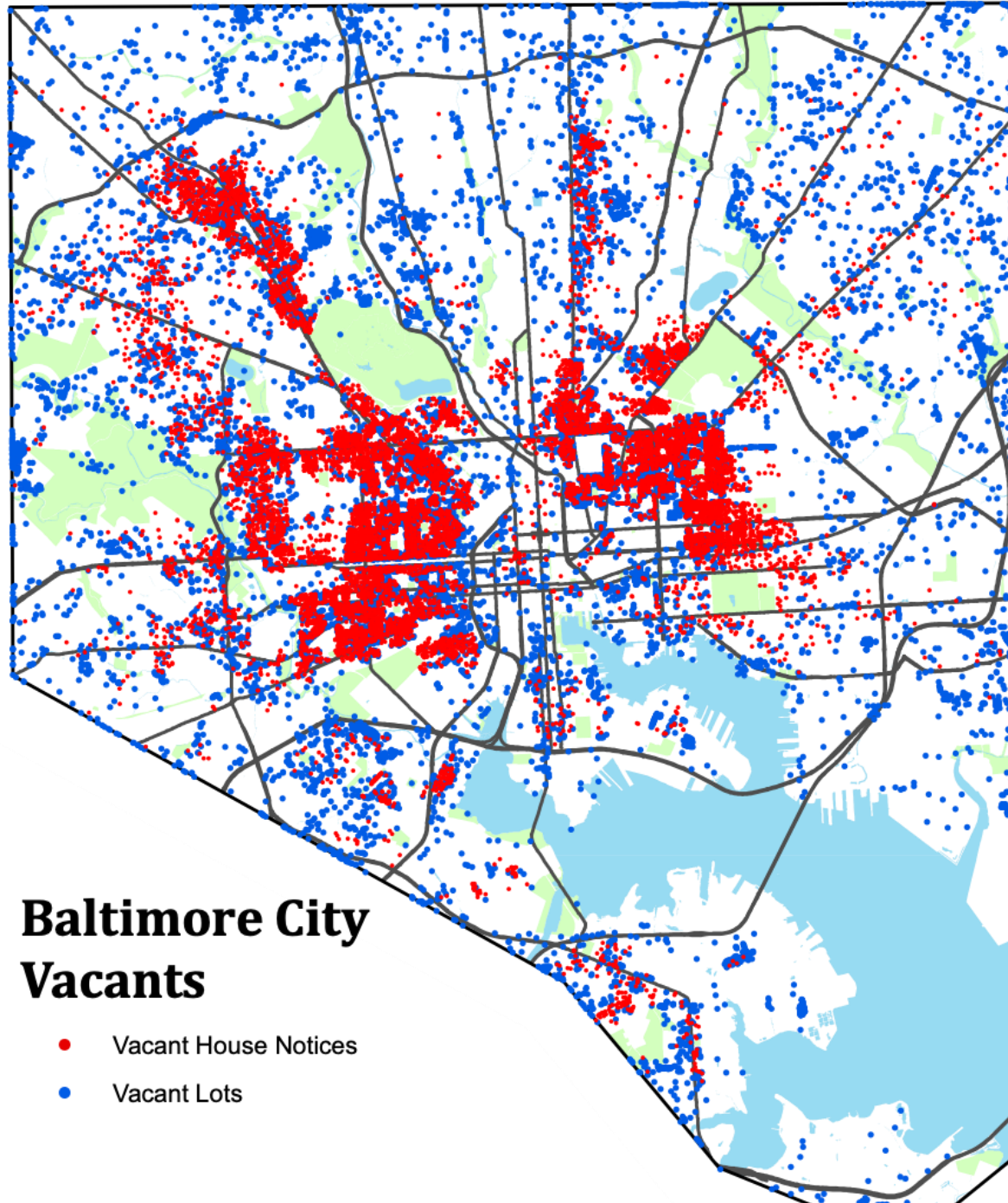
White Privilege

Structural Inequity

Accountability to Community

How does the visible remain invisible?



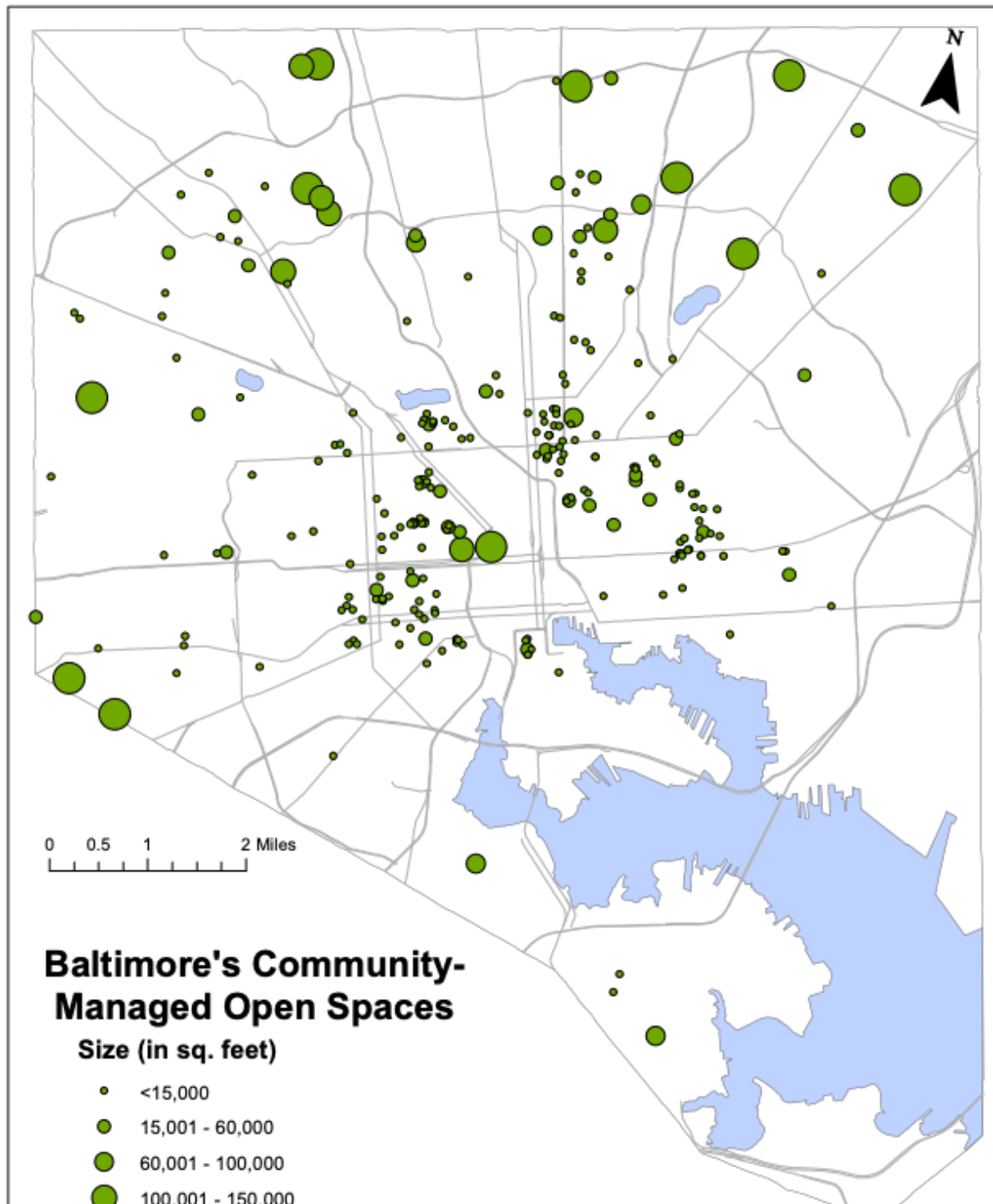


Baltimore City Vacants

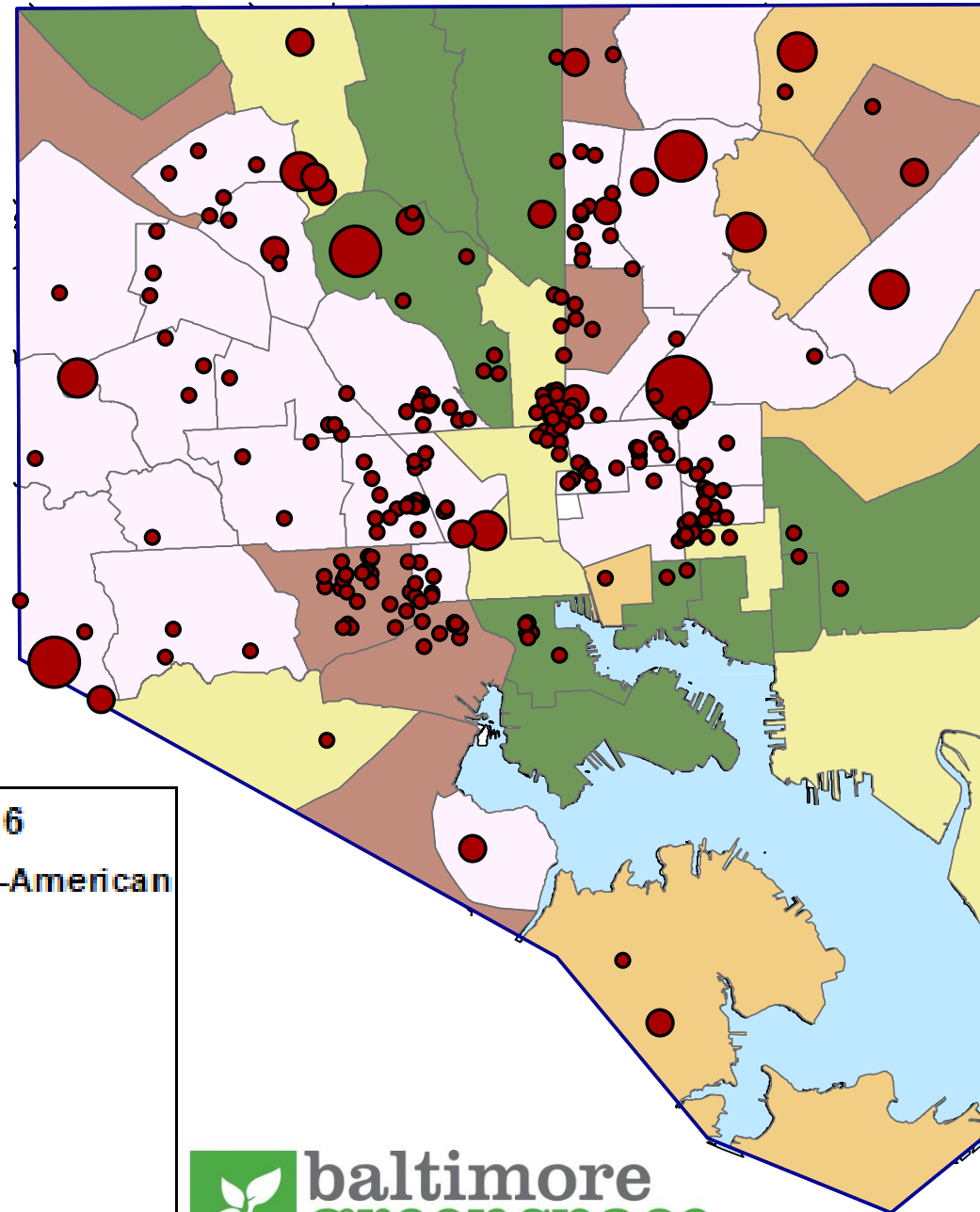
- Vacant House Notices
- Vacant Lots

Visibility and voice
Adjust the narrative
Share the narrative

Mapping green
spaces to tell the
story so it can
speak for itself.



Active CMOS Sites Compared to Percent of Population that is African American



Active CMOS Sites Vital Signs 2016	
Acres	Percent African-American
• 0.00 - 1.21	2% - 21%
• 1.22 - 3.83	22% - 40%
• 3.84 - 8.49	41% - 59%
• 8.50 - 24.91	60% - 78%
• 24.92 - 309.18	79% - 97%

Taking it to the level of advocacy in policy arenas where you are at the table.

Ask where the funding is and where it isn't ?

The Myth of the missing environmentalist from communities of color

287 Community

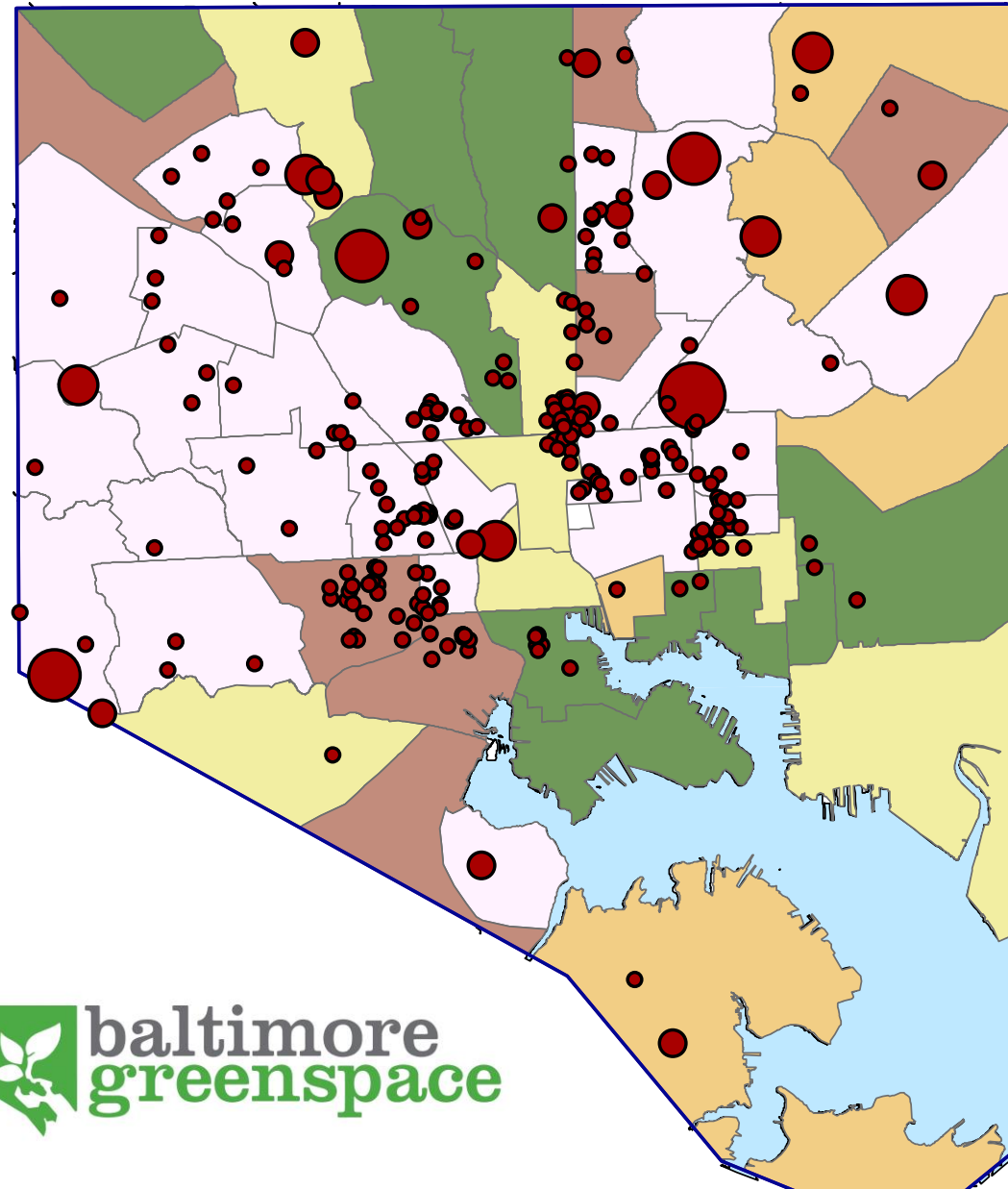
Green Spaces in our
database

163 Gardens growing
food or flowers

41 Pocket Parks

57 Clean & Greens

**26 Community
Forests**



A woman in a patterned dress stands at the front of a room, presenting a large map on a screen. She is gesturing with her hands. The room is filled with people seated around a large, dark wooden table. The background features large, ornate windows with dark wood frames and light-colored curtains. The lighting is warm and indoor.

WHO IS AT
THE TABLE?

Is there a meaningful role
for community?

Progress not Perfection



Graceful with Rejection

We build from
our combined
gifts and strength.

Co-creating.



Are your equity goals treated equitably with your other priorities and evaluated?

- Progress Tracking
- Budget allocation
- Presences in policy and strategic plan
- Hiring practices
- Soliciting feedback
- Advocating with peers